

Heigh-Ho

Secondo (from: Snow White And The Seven Dwarfs")

Larry Morey,
1905-1971

Frank E. Churchill, 1901-1942
arr. Laurel Hunt Pedersen

1

5

9

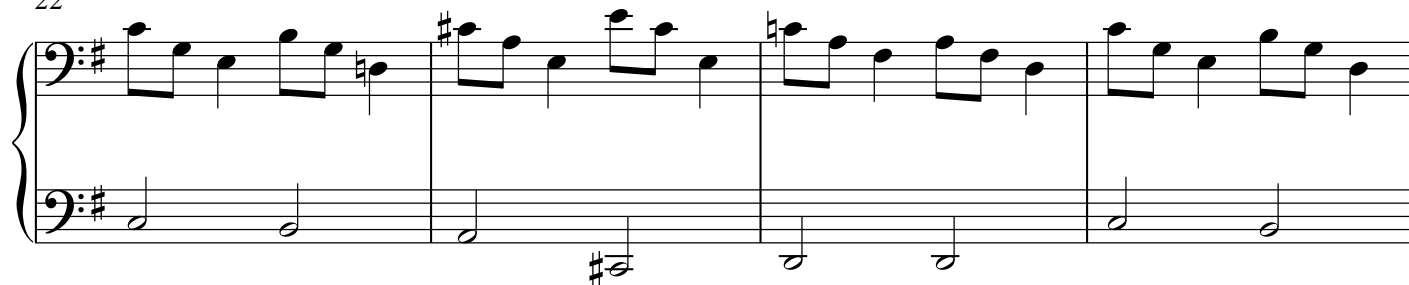
12

15

18



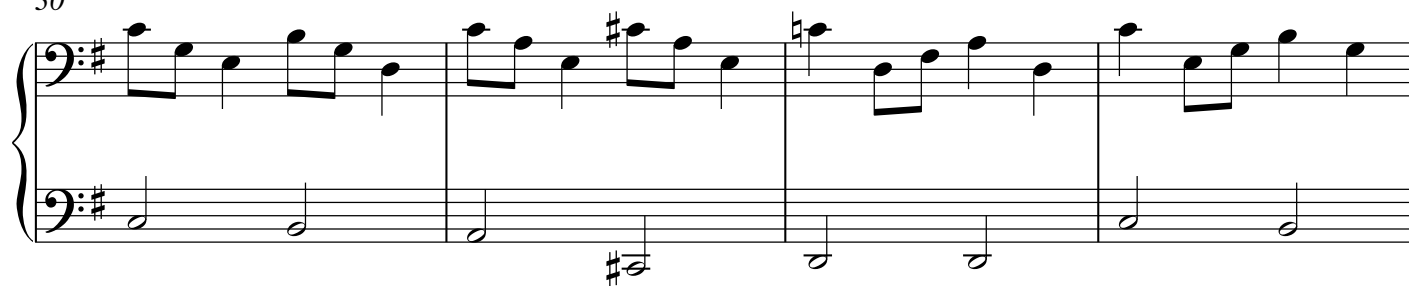
22



26



30



34



Heigh-Ho

Primo (from: Snow White And The Seven Dwarfs")

Larry Morey,
1905-1971

Frank E. Churchill, 1901-1942
arr. Laurel Hunt Pedersen

1 *8va*

"Heigh -

Detailed description: This system contains measures 1 through 4. The music is in 4/4 time with a key signature of one sharp (F#). The melody is written on a treble clef staff with an 8va (octave up) marking. The bass line is on a bass clef staff. Measure 1: Treble has a dotted quarter note F#4, an eighth note G4, and a quarter note A4. Bass has a whole note F#2. Measure 2: Treble has a dotted quarter note B4, an eighth note A4, and a quarter note G4. Bass has a whole note F#2. Measure 3: Treble has a dotted quarter note A4, an eighth note G4, and a quarter note F#4. Bass has a whole note F#2. Measure 4: Treble has a dotted half note G4. Bass has a whole note F#2. The lyrics "Heigh -" are under measure 4.

5 *8va*

ho," "heigh - ho," To make your trou - bles go, Just

Detailed description: This system contains measures 5 through 8. Measure 5: Treble has a dotted half note G4. Bass has a whole note F#2. Lyrics: "ho,". Measure 6: Treble has a dotted half note A4. Bass has a whole note F#2. Lyrics: "heigh -". Measure 7: Treble has a dotted quarter note B4, an eighth note A4, and a quarter note G4. Bass has a whole note F#2. Lyrics: "ho,". Measure 8: Treble has a dotted half note G4. Bass has a whole note F#2. Lyrics: "To".

9 *8va*

keep on sing - ing all day long "Heigh - ho," "heigh -

Detailed description: This system contains measures 9 through 11. Measure 9: Treble has a dotted half note G4. Bass has a whole note F#2. Lyrics: "keep". Measure 10: Treble has a dotted half note A4. Bass has a whole note F#2. Lyrics: "on". Measure 11: Treble has a dotted half note B4. Bass has a whole note F#2. Lyrics: "sing - ing".

12 *8va*

ho." "Heigh - ho," "heigh - ho." "heigh - ho," For

Detailed description: This system contains measures 12 through 14. Measure 12: Treble has a dotted half note G4. Bass has a whole note F#2. Lyrics: "ho." Measure 13: Treble has a dotted half note A4. Bass has a whole note F#2. Lyrics: "Heigh -". Measure 14: Treble has a dotted half note B4. Bass has a whole note F#2. Lyrics: "ho,".

15 *8va*

if you're feel - ing low, You pos - i - tive - ly

Detailed description: This system contains measures 15 through 17. Measure 15: Treble has a dotted half note G4. Bass has a whole note F#2. Lyrics: "if". Measure 16: Treble has a dotted half note A4. Bass has a whole note F#2. Lyrics: "you're feel - ing". Measure 17: Treble has a dotted half note B4. Bass has a whole note F#2. Lyrics: "low,".

18 *8va*

can't go wrong With a "heigh," "heigh - ho." "Heigh-ho," "heigh- ho," "heigh -

22 *8va*

ho," It's home from work we go, Just keep on sing - ing

26 *8va*

all day long "Heigh- ho," "heigh - ho." "Heigh-ho," "heigh- ho." "heigh -

30 *8va*

ho," All sev - en in a row, (Whistle)

34 *8va*

With a "heigh," "heigh - ho." "Heigh-ho," "heigh- ho!"