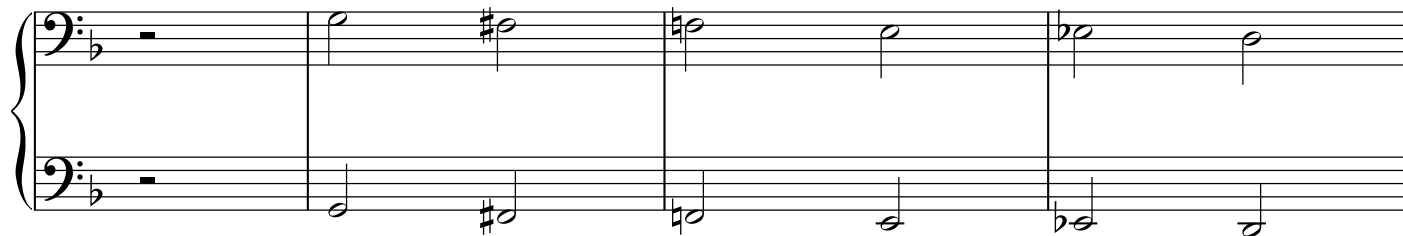


Be Kind To Your Web-Footed Friends

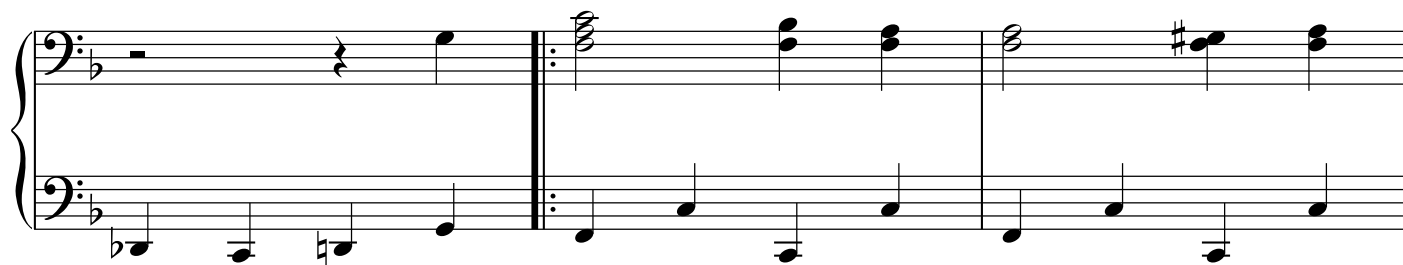
Secondo

John Philip Sousa, 1854-1932
arr. Laurel Hunt Pedersen

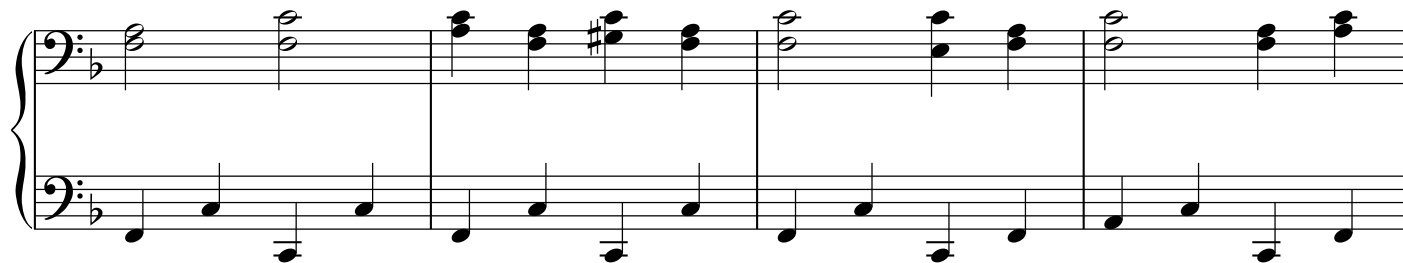
1



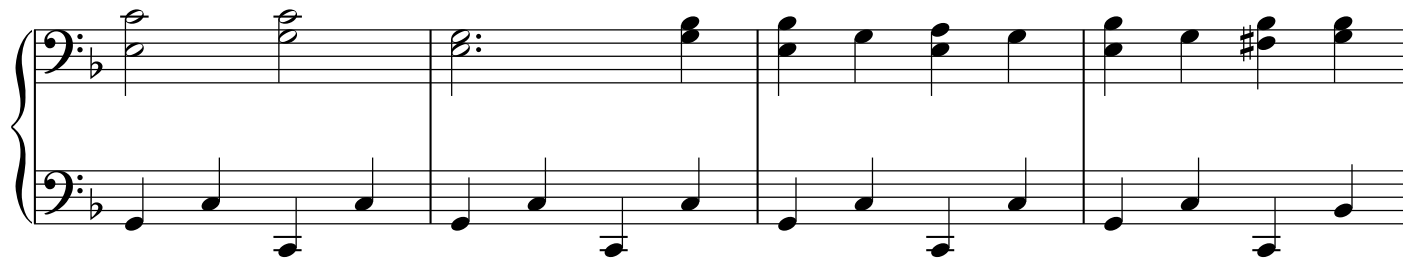
5



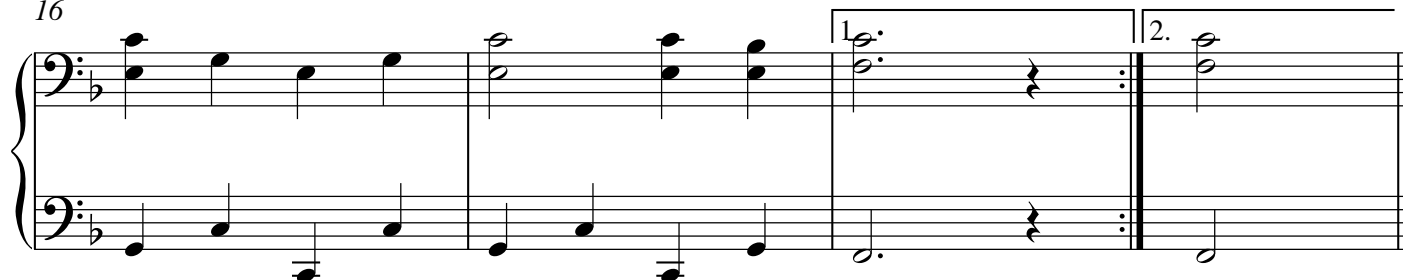
8



12



16



Be Kind To Your Web-Footed Friends

21

Primo

John Philip Sousa, 1854-1932

arr. Laurel Hunt Pedersen

1 *8va*

Measures 1-4 of the piece. The melody is in the treble clef, starting on a whole rest, then moving to a half note G4, quarter note A4, quarter note B4, quarter note C5, quarter note B4, quarter note A4, quarter note G4, quarter note F#4, quarter note E4, quarter note D4. The bass line starts on a whole rest, then moves to a half note G3, quarter note A3, quarter note B3, quarter note C4, quarter note B3, quarter note A3, quarter note G3, quarter note F#3, quarter note E3, quarter note D3.

5 *8va*

Measures 5-7 of the piece. The melody is in the treble clef, starting on a half note G4, quarter note A4, quarter note B4, quarter note C5, quarter note B4, quarter note A4, quarter note G4, quarter note F#4, quarter note E4, quarter note D4. The bass line starts on a half note G3, quarter note A3, quarter note B3, quarter note C4, quarter note B3, quarter note A3, quarter note G3, quarter note F#3, quarter note E3, quarter note D3. The lyrics are: Be kind to your web - foot - ed

8 *8va*

Measures 8-11 of the piece. The melody is in the treble clef, starting on a half note G4, quarter note A4, quarter note B4, quarter note C5, quarter note B4, quarter note A4, quarter note G4, quarter note F#4, quarter note E4, quarter note D4. The bass line starts on a half note G3, quarter note A3, quarter note B3, quarter note C4, quarter note B3, quarter note A3, quarter note G3, quarter note F#3, quarter note E3, quarter note D3. The lyrics are: friends, For a duck may be some - bod - y's

12 *8va*

Measures 12-15 of the piece. The melody is in the treble clef, starting on a half note G4, quarter note A4, quarter note B4, quarter note C5, quarter note B4, quarter note A4, quarter note G4, quarter note F#4, quarter note E4, quarter note D4. The bass line starts on a half note G3, quarter note A3, quarter note B3, quarter note C4, quarter note B3, quarter note A3, quarter note G3, quarter note F#3, quarter note E3, quarter note D3. The lyrics are: moth - er, You may think that this is the

16 *8va*

Measures 16-19 of the piece. The melody is in the treble clef, starting on a half note G4, quarter note A4, quarter note B4, quarter note C5, quarter note B4, quarter note A4, quarter note G4, quarter note F#4, quarter note E4, quarter note D4. The bass line starts on a half note G3, quarter note A3, quarter note B3, quarter note C4, quarter note B3, quarter note A3, quarter note G3, quarter note F#3, quarter note E3, quarter note D3. The lyrics are: end, And it ain't. Be is.