

# The Lord at First Did Adam Make

Ancient English carol  
arr. Laurel Hunt Pedersen

1 The Lord at first did A - dam make Out of the dust and clay;  
 3 For in the day that thou shalt eat, Or do it them come nigh;  
 5 Which pro - mise now is brought to pass, Chris - tians, be - lieve it well;  
 7 And now the tide is night at hand, Int' which our Sav - iour came;

And in his nos - trils breathed life E'en  
 For if that thou doth eat there - of Then  
 And by the com - ing of God's dear Son We  
 8 Let us re - joice, and mer - ry be, In

as the Scrip - tures say, And then in E - dens  
 sure - ly thou shalt die. But A - dam he did  
 are re - deemed from thrall. Then if we tru - ly  
 11 keep - ing of the same. Let's feed the poor and

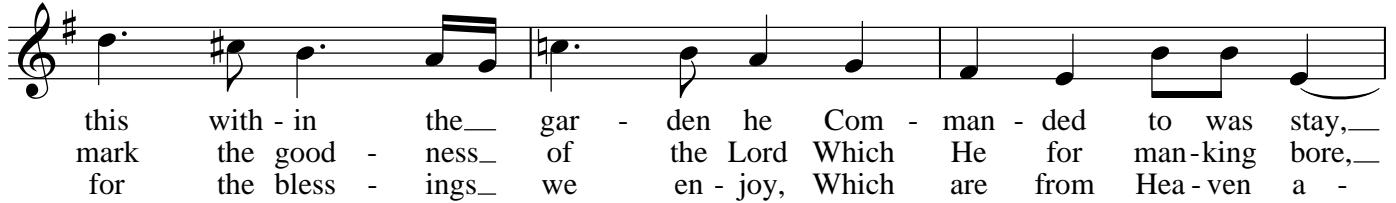
par - a - dise. He placed him to dwell, That  
 take no heed Un - to that on - ly thing, But  
 do be - lieve, And do the thing a - right; Then  
 14 hun - gry souls, And such as do it crave; Then

he with - in it should re - main To dress and keep it well.  
 did trans - gress God's ho - ly law, And so was wrapt in sin.  
 by his mer - its we at last Shall live in Hea - ven bright.  
 17 when we die, in Hea - ven sure, Our re - ward we shall have.

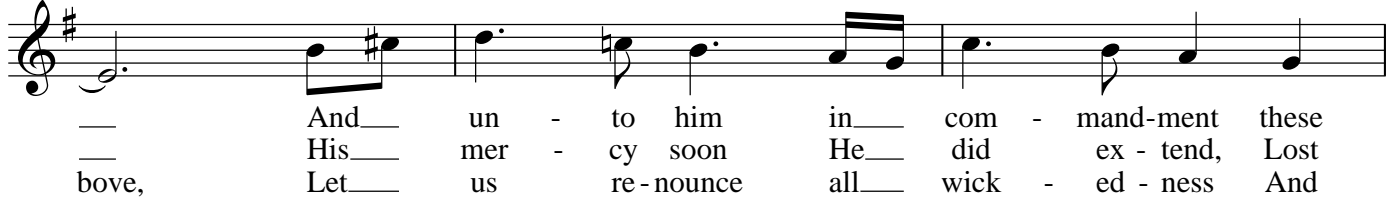
Now let good Chris - tians all be - gin An  
 ho - ly life to live, And to re - joice and  
 20 mer - ry be, For this is Christ - mas Eve.  
 23

2. And  
 4. Now  
 6. Now

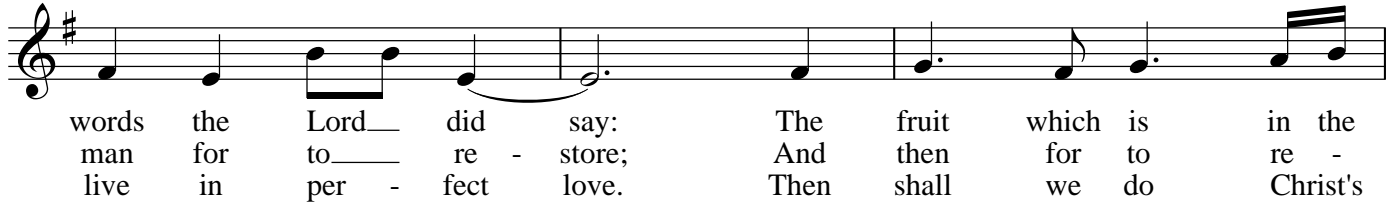
27



30



33



36



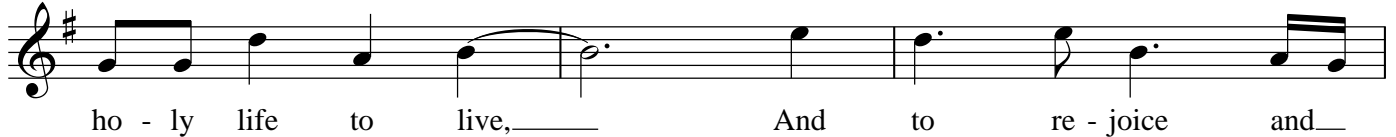
39



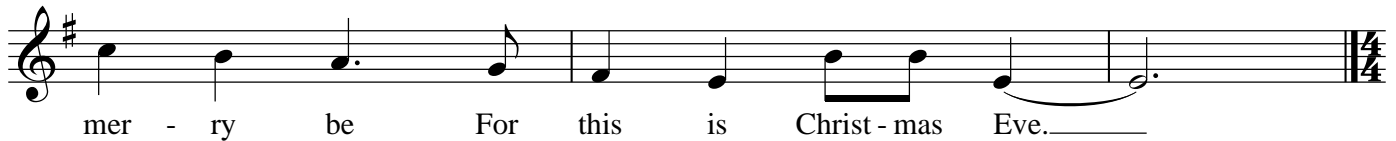
42



45



48



## The Lord At First Did Adam Make

Ancient English carol  
arr. Laurel Hunt Pedersen

1

Great {

Measures 1-5 of the piece. The key signature is one sharp (F#) and the time signature is 4/4. The music is written for piano with a grand staff (treble and bass clefs). The melody is in the treble clef, and the accompaniment is in the bass clef. The first measure is marked with a '1' and a 'Great' bracket. The melody starts with a quarter note G4, followed by a quarter note A4, a quarter note B4, and a quarter note C5. The accompaniment starts with a whole note G3, followed by a whole note A3, a whole note B3, and a whole note C4. The melody continues with a quarter note B4, a quarter note A4, a quarter note G4, and a quarter note F#4. The accompaniment continues with a whole note D3, a whole note E3, a whole note F#3, and a whole note G3. The melody ends with a quarter note E4, a quarter note D4, and a quarter note C4. The accompaniment ends with a whole note F#3, a whole note G3, and a whole note A3.

6

Measures 6-10 of the piece. The melody continues with a quarter note B4, a quarter note A4, a quarter note G4, and a quarter note F#4. The accompaniment continues with a whole note D3, a whole note E3, a whole note F#3, and a whole note G3. The melody continues with a quarter note E4, a quarter note D4, and a quarter note C4. The accompaniment continues with a whole note F#3, a whole note G3, and a whole note A3. The melody continues with a quarter note B4, a quarter note A4, a quarter note G4, and a quarter note F#4. The accompaniment continues with a whole note D3, a whole note E3, a whole note F#3, and a whole note G3. The melody continues with a quarter note E4, a quarter note D4, and a quarter note C4. The accompaniment continues with a whole note F#3, a whole note G3, and a whole note A3.

11

Measures 11-15 of the piece. The melody continues with a quarter note B4, a quarter note A4, a quarter note G4, and a quarter note F#4. The accompaniment continues with a whole note D3, a whole note E3, a whole note F#3, and a whole note G3. The melody continues with a quarter note E4, a quarter note D4, and a quarter note C4. The accompaniment continues with a whole note F#3, a whole note G3, and a whole note A3. The melody continues with a quarter note B4, a quarter note A4, a quarter note G4, and a quarter note F#4. The accompaniment continues with a whole note D3, a whole note E3, a whole note F#3, and a whole note G3. The melody continues with a quarter note E4, a quarter note D4, and a quarter note C4. The accompaniment continues with a whole note F#3, a whole note G3, and a whole note A3.

16

Measures 16-20 of the piece. The melody continues with a quarter note B4, a quarter note A4, a quarter note G4, and a quarter note F#4. The accompaniment continues with a whole note D3, a whole note E3, a whole note F#3, and a whole note G3. The melody continues with a quarter note E4, a quarter note D4, and a quarter note C4. The accompaniment continues with a whole note F#3, a whole note G3, and a whole note A3. The melody continues with a quarter note B4, a quarter note A4, a quarter note G4, and a quarter note F#4. The accompaniment continues with a whole note D3, a whole note E3, a whole note F#3, and a whole note G3. The melody continues with a quarter note E4, a quarter note D4, and a quarter note C4. The accompaniment continues with a whole note F#3, a whole note G3, and a whole note A3.

21

Measures 21-25 of a musical score. The system consists of three staves: a grand staff (treble and bass clefs) and a separate bass staff. The key signature has three sharps (F#, C#, G#). The melody in the treble staff begins with a half note G4, followed by quarter notes A4, B4, and C5. The bass staff of the grand staff has a half note G2, and the separate bass staff has a half note G1. The music concludes with a double bar line and a key signature change to four sharps (F#, C#, G#, D#).

26

Measures 26-29 of a musical score. The system consists of three staves: a grand staff (treble and bass clefs) and a separate bass staff. The key signature has four sharps (F#, C#, G#, D#). The word "Swell" is written above the first measure of the grand staff. The melody in the treble staff begins with a half note G4, followed by quarter notes A4, B4, and C5. The bass staff of the grand staff has a half note G2, and the separate bass staff has a half note G1. The music concludes with a double bar line.

30

Measures 30-33 of a musical score. The system consists of three staves: a grand staff (treble and bass clefs) and a separate bass staff. The key signature has four sharps (F#, C#, G#, D#). The melody in the treble staff begins with a half note G4, followed by quarter notes A4, B4, and C5. The bass staff of the grand staff has a half note G2, and the separate bass staff has a half note G1. The music concludes with a double bar line.

34

Measures 34-37 of a musical score. The system consists of three staves: a grand staff (treble and bass clefs) and a separate bass staff. The key signature has four sharps (F#, C#, G#, D#). The word "Great" is written above the first measure of the grand staff. The melody in the treble staff begins with a half note G4, followed by quarter notes A4, B4, and C5. The bass staff of the grand staff has a half note G2, and the separate bass staff has a half note G1. The music concludes with a double bar line.

38

Measures 38-41 of a musical score in E major (three sharps). The score is written for piano with three staves: Treble, Bass, and a lower Bass staff. Measures 38 and 39 show a melodic line in the Treble staff and a bass line in the Bass staff. Measure 40 features a sustained chord in the Bass staff. Measure 41 concludes the phrase with a final chord in the Bass staff.

42

Measures 42-45 of the musical score. Measures 42 and 43 continue the melodic and bass lines. Measure 44 shows a sustained chord in the Bass staff. Measure 45 concludes the phrase with a final chord in the Bass staff.

46

Measures 46-49 of the musical score. Measures 46 and 47 continue the melodic and bass lines. Measure 48 features a sustained chord in the Bass staff. Measure 49 concludes the phrase with a final chord in the Bass staff.

50

Measures 50-53 of the musical score. Measure 50 begins with a 'Swell' instruction. Measures 50 and 51 show a melodic line in the Treble staff and a bass line in the Bass staff. Measure 52 features a sustained chord in the Bass staff. Measure 53 concludes the phrase with a final chord in the Bass staff.

54

Measures 54-58 of a musical score in A major (three sharps). The score is written for piano with three staves: Treble, Middle, and Bass. Measure 54 features a half note G4 in the Treble and a half note C4 in the Bass. Measure 55 has a half note A4 in the Treble and a half note D4 in the Bass. Measure 56 contains a half note B4 in the Treble and a half note E4 in the Bass. Measure 57 has a half note C5 in the Treble and a half note F#4 in the Bass. Measure 58 has a half note B4 in the Treble and a half note E4 in the Bass.

59

Measures 59-63 of a musical score in A major. Measure 59 has a half note G4 in the Treble and a half note C4 in the Bass. Measure 60 has a half note A4 in the Treble and a half note D4 in the Bass. Measure 61 contains a half note B4 in the Treble and a half note E4 in the Bass. Measure 62 has a half note C5 in the Treble and a half note F#4 in the Bass. Measure 63 has a half note B4 in the Treble and a half note E4 in the Bass.

64

Measures 64-68 of a musical score in A major. Measure 64 has a half note G4 in the Treble and a half note C4 in the Bass. Measure 65 has a half note A4 in the Treble and a half note D4 in the Bass. Measure 66 contains a half note B4 in the Treble and a half note E4 in the Bass. Measure 67 has a half note C5 in the Treble and a half note F#4 in the Bass. Measure 68 has a half note B4 in the Treble and a half note E4 in the Bass.

69

Measures 69-73 of a musical score in A major. Measure 69 has a half note G4 in the Treble and a half note C4 in the Bass. Measure 70 has a half note A4 in the Treble and a half note D4 in the Bass. Measure 71 contains a half note B4 in the Treble and a half note E4 in the Bass. Measure 72 has a half note C5 in the Treble and a half note F#4 in the Bass. Measure 73 has a half note B4 in the Treble and a half note E4 in the Bass.