

The Crocodile

Secondo

Lewis Carroll, 1832-1898

Ruth Morris Gray, 1961
arr. Laurel Hunt Pedersen

1

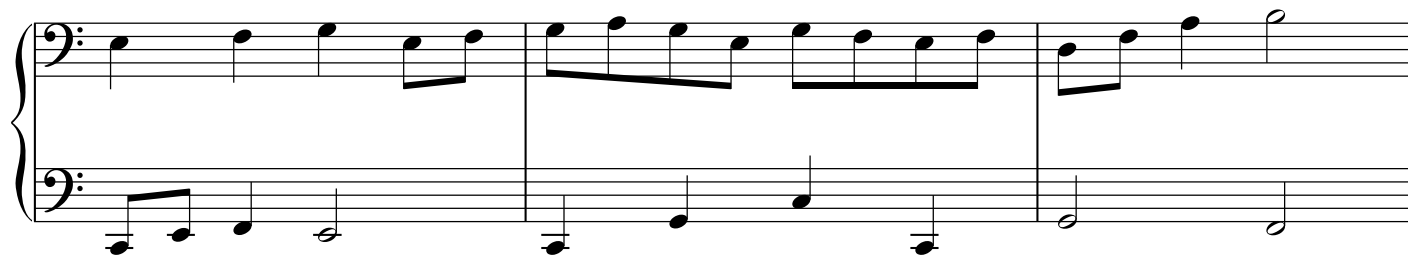
4

7

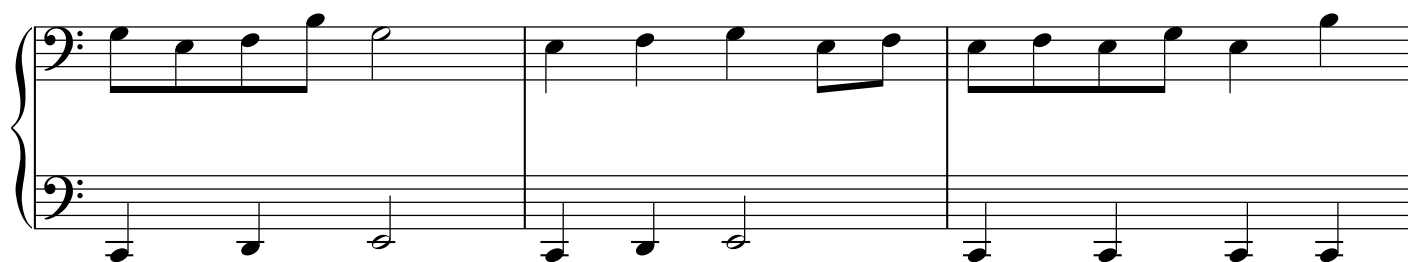
10

13

17



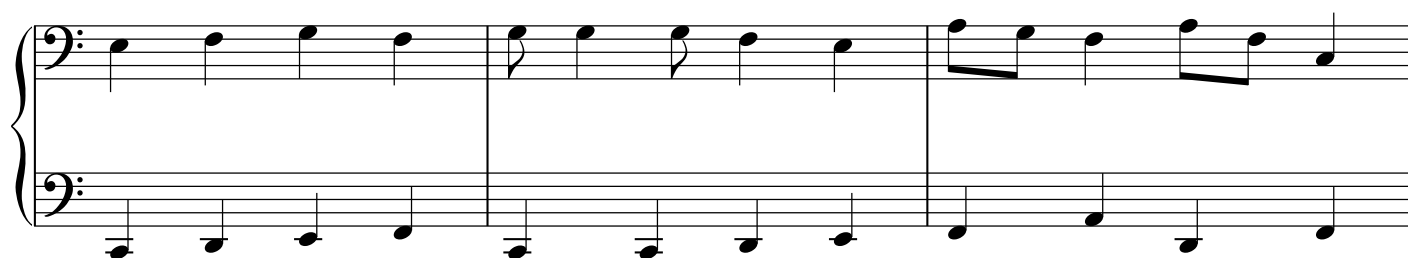
20



23



26



29



The Crocodile

Primo

Lewis Carroll, 1832-1898

Ruth Morris Gray, 1961
arr. Laurel Hunt Pedersen

8^{va} 1

She sailed a - way, on a sun - ny sum - mer day, On the back of a croc - o -


4 *8va*

dile. "You'll see," said she. "he's as tame as tame can be; I'll

7 *8va*

ride him down the Nile." The croc winked his eye, as she

10 *8va*



bade them all good-bye, Wear-ing a hap - py smile. At the

13 *8va*

end of the ride, the la - dy was in-side, And the smile on the croc - o - dle.

17 *8va-*

Measures 17-19. Treble clef: Measure 17 has a dotted quarter note G4, eighth note A4, quarter note B4, and eighth note C5. Measure 18 has eighth notes D5, E5, F5, G5, eighth notes A5, B5, C6, and quarter note D6. Measure 19 has quarter notes E5, D5, C5, and B4. Bass clef: Measure 17 has quarter notes G2, A2, B2, and C3. Measure 18 has quarter notes D3, E3, F3, and G3. Measure 19 has half notes A2 and G2.

20 *8va-*

Measures 20-22. Treble clef: Measure 20 has a dotted half note G4. Measure 21 has quarter notes A4, B4, C5, and D5. Measure 22 has eighth notes E5, F5, G5, and quarter note A5. Bass clef: Measure 20 has quarter notes G2, F2, and E2. Measure 21 has quarter notes D2, C2, and B1. Measure 22 has quarter notes A1, G1, and F1.

23 *8va-*

Measures 23-25. Treble clef: Measure 23 has quarter notes G4, A4, B4, and C5. Measure 24 has a dotted half note D5. Measure 25 has quarter notes E5, F5, G5, and A5. Bass clef: Measure 23 has quarter notes G2, F2, and E2. Measure 24 has a dotted half note D2. Measure 25 has quarter notes C2, B1, and A1.

26 *8va-*

Measures 26-28. Treble clef: Measure 26 has quarter notes G4, A4, B4, and C5. Measure 27 has eighth notes D5, E5, F5, and quarter note G5. Measure 28 has a whole note A5. Bass clef: Measure 26 has quarter notes G2, F2, and E2. Measure 27 has eighth notes D2, C2, and B1. Measure 28 has quarter notes A1, G1, and F1 with a sharp sign on the A1.

29 *8va-*

Measures 29-32. Treble clef: Measure 29 has quarter notes G4, A4, B4, and C5. Measure 30 has eighth notes D5, E5, F5, and quarter note G5. Measure 31 has quarter notes A5, B5, C6, and D6. Measure 32 has a dotted half note E6. Bass clef: Measure 29 has quarter notes G2, F2, and E2 with a sharp sign on the F2. Measure 30 has quarter notes D2, C2, and B1 with a sharp sign on the C2. Measure 31 has quarter notes A1, G1, and F1 with a double sharp sign on the A1. Measure 32 has a dotted half note E1.