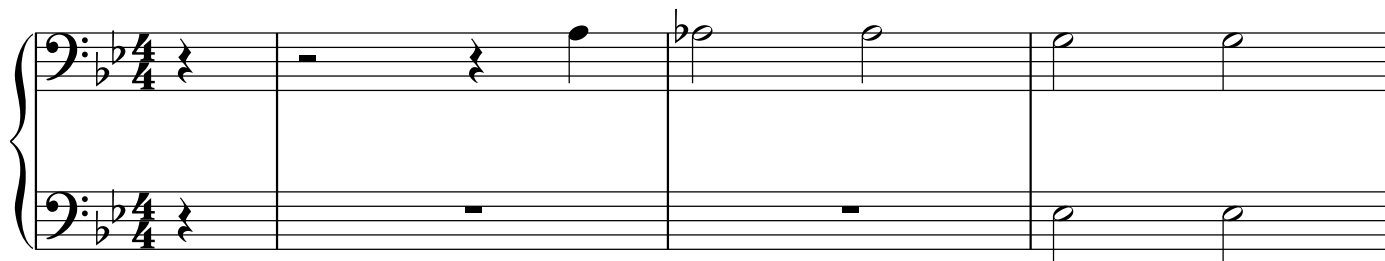


# Sarah the Whale

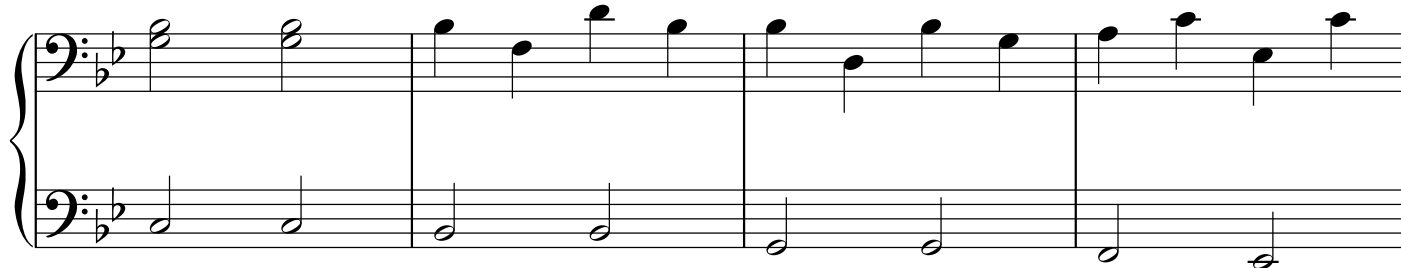
## Secondo

Folk song  
arr. Laurel Hunt Pedersen

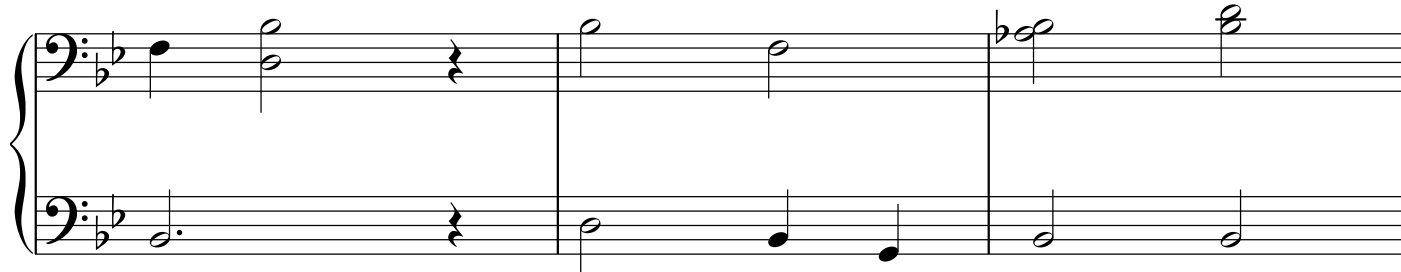
1



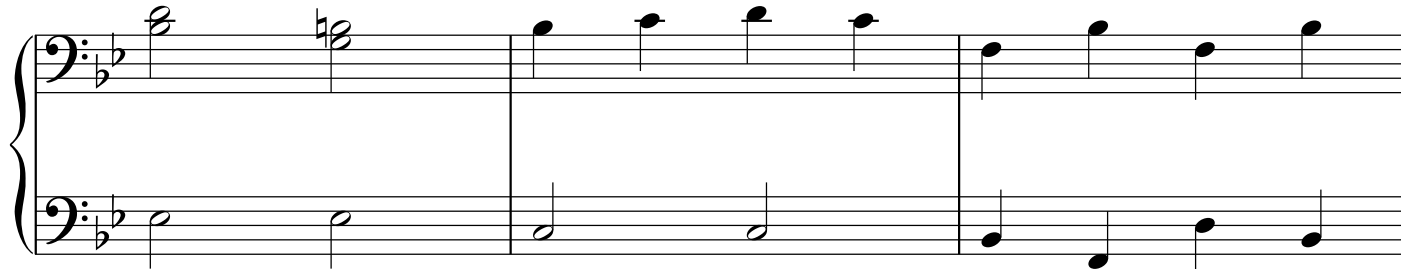
4



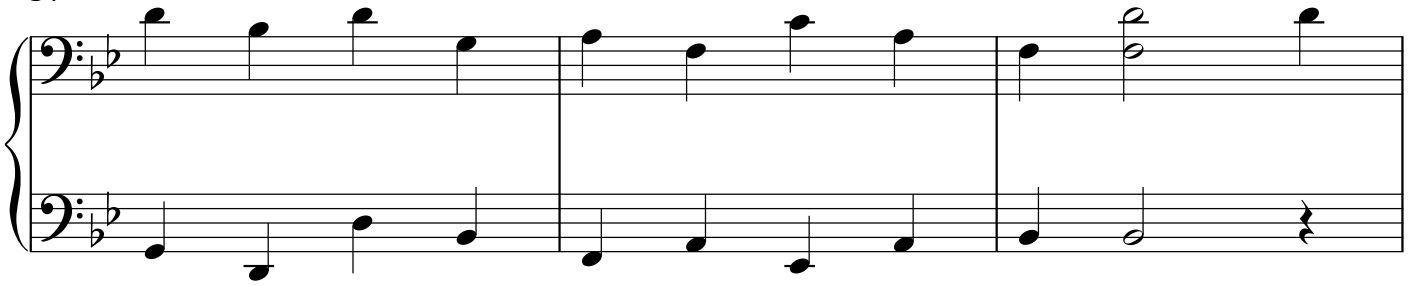
8



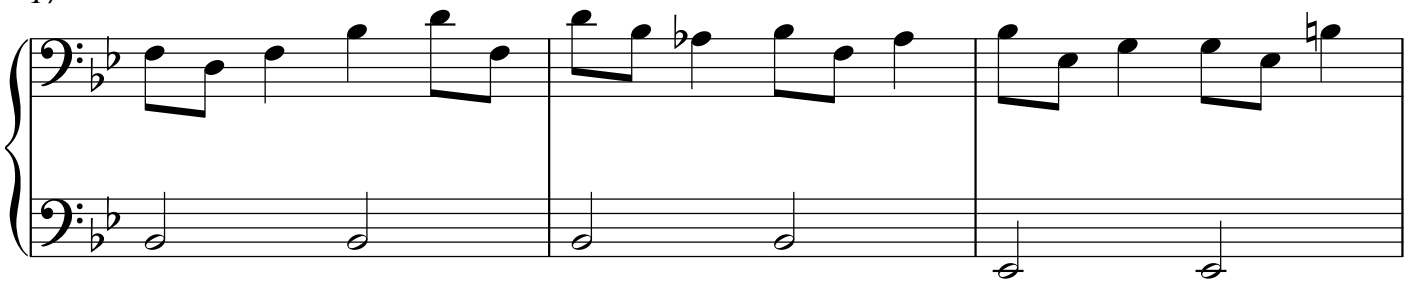
11



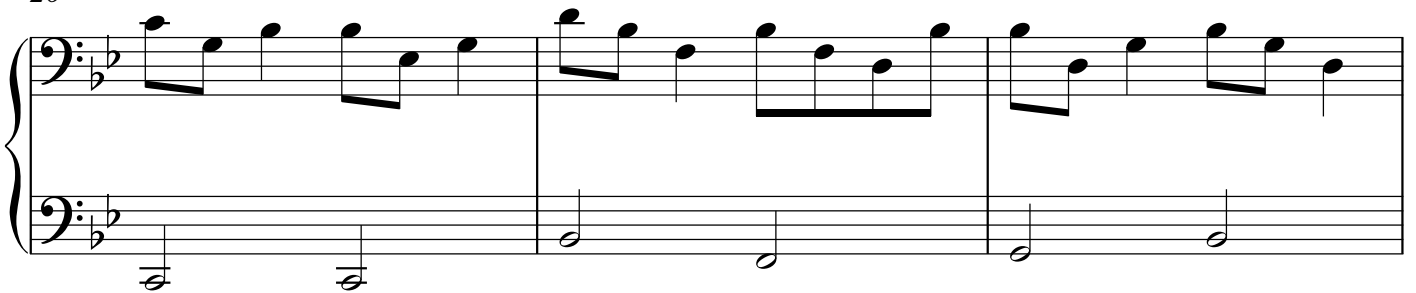
14



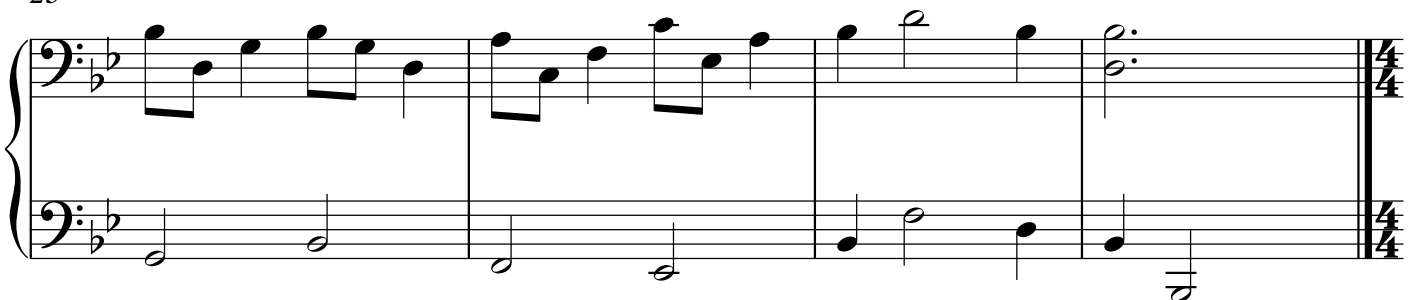
17



20



23



# Sarah the Whale

Primo

Folk song  
arr. Laurel Hunt Pedersen

8va-----  
1

In Fris - co Bay, there lived a whale, They fed her oy - sters

4 8va-----

by the pail, by thim-ble, by tea - cup, by bath-tub and by

8 8va-----

schoon - er. Her name was Sa - rah and when she smiled, She

11 8va-----

just showed teeth for miles and miles, and ton - sils and

14 *8va*

spare - ribs, and things too fierce to men - tion. Now

This system contains measures 14, 15, and 16. The melody is written in the treble clef with a key signature of two flats (B-flat and E-flat). The lyrics are: 'spare - ribs, and things too fierce to men - tion. Now'. The piano accompaniment is in the bass clef, featuring a steady eighth-note bass line.

17 *8va*

what would you do, with a whale like that? Now what would you do

This system contains measures 17, 18, and 19. The melody continues in the treble clef. The lyrics are: 'what would you do, with a whale like that? Now what would you do'. The piano accompaniment in the bass clef provides harmonic support with sustained notes.

20 *8va*

if she sat on your hat? Or your tooth brush, Or your

This system contains measures 20, 21, and 22. The melody is in the treble clef. The lyrics are: 'if she sat on your hat? Or your tooth brush, Or your'. The piano accompaniment in the bass clef continues with a consistent rhythmic pattern.

23 *8va*

moth - er, Or an - y - thing that's help - less? Like that!!

This system contains measures 23, 24, and 25. The melody is in the treble clef. The lyrics are: 'moth - er, Or an - y - thing that's help - less? Like that!!'. The piano accompaniment in the bass clef concludes the phrase with a final sustained note.