

Little Peter Rabbit

Secondo

Traditional tune
arr. Laurel Hunt Pedersen

1

Measures 1-4 of the piano arrangement. The treble clef staff contains a melody of eighth notes with stems pointing up, starting on G4 and moving up stepwise to A4. The bass clef staff contains a simple accompaniment of whole notes, starting on E3 and moving up stepwise to F3. The time signature is 4/4.

5

Measures 5-8 of the piano arrangement. The treble clef staff continues the melody of eighth notes with stems pointing up. The bass clef staff continues the accompaniment of whole notes. The time signature is 4/4.

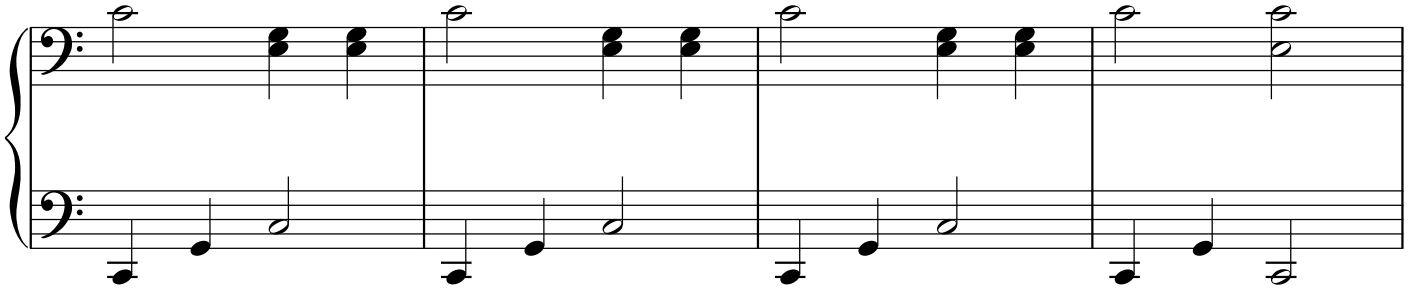
9

Measures 9-12 of the piano arrangement. The treble clef staff continues the melody. In measure 12, the treble staff has a half rest, and the bass staff has a half note G3. The time signature is 4/4.

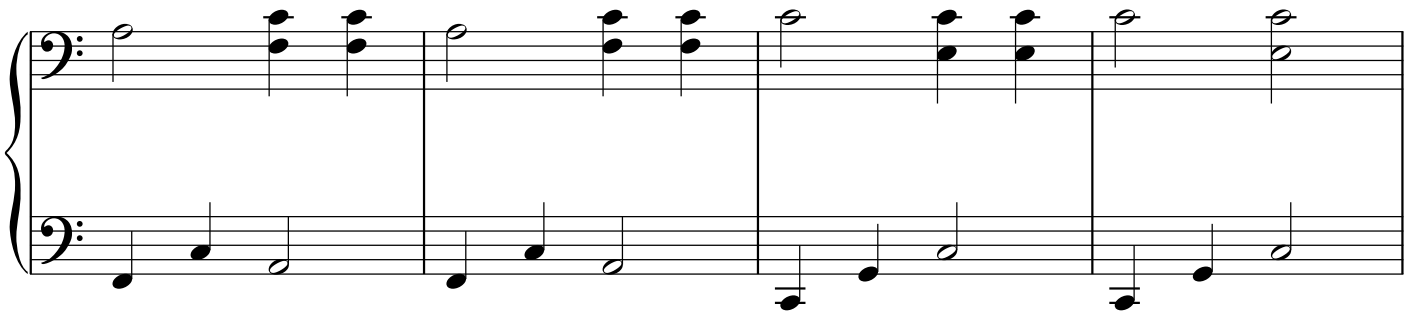
13

Measures 13-16 of the piano arrangement. The treble clef staff continues the melody. In measure 16, the treble staff has a half rest, and the bass staff has a half note G3. The time signature is 4/4.

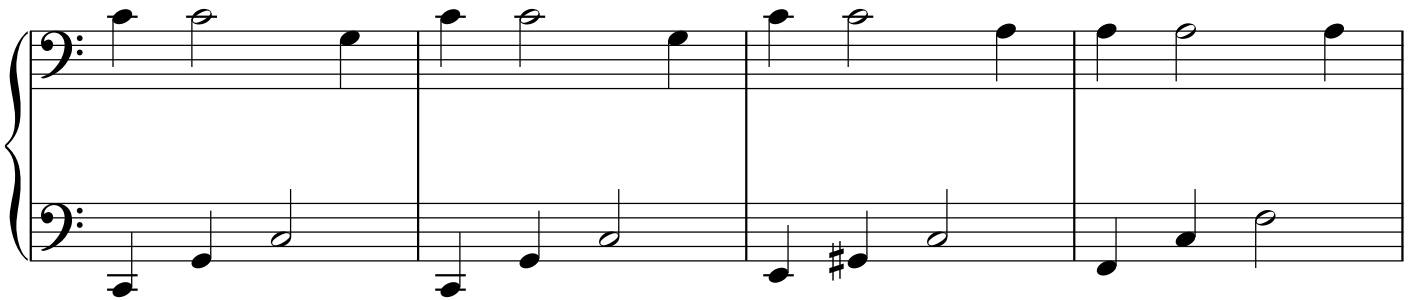
17



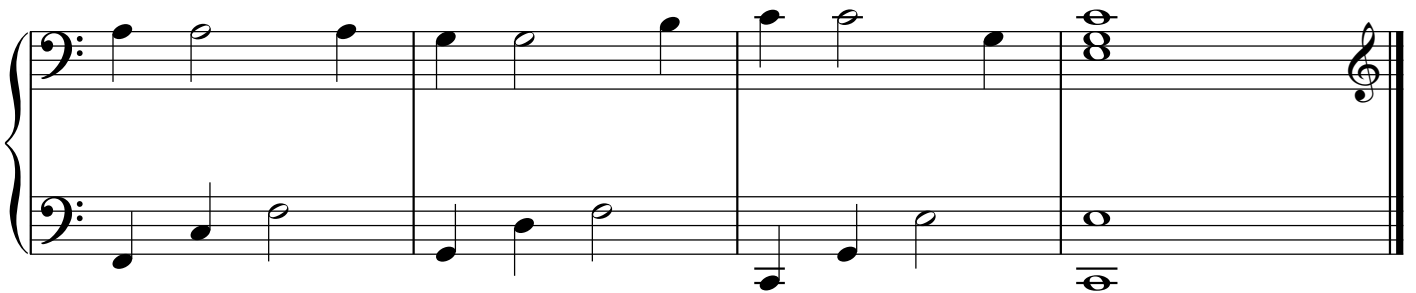
21



25



29



Little Peter Rabbit

Primo

Traditional tune
arr. Laurel Hunt Pedersen

1 *8va*

1. Lit - tle Pe - ter Rab - bit had a fly up - on his nose,
3. Lit - tle Pe - ter Rab - bit had a spi - der on his knee,

The musical notation for measures 1-4 is shown. The treble clef staff has a dashed line labeled '8va' above it. The melody consists of quarter notes in measures 1-3 and a half note in measure 4. The bass clef staff provides a simple accompaniment with half notes and whole notes.

5 *8va*

Lit - tle Pe - ter Rab - bit had a fly up - on his nose,
Lit - tle Pe - ter Rab - bit had a spi - der on his knee,

The musical notation for measures 5-8 is shown. The melody continues with quarter notes in measures 5-7 and a half note in measure 8. The bass clef staff continues the accompaniment.

9 *8va*

Lit - tle Pe - ter Rab - bit had a fly up - on his nose; He
Lit - tle Pe - ter Rab - bit had a spi - der on his knee, He

The musical notation for measures 9-12 is shown. The melody continues with quarter notes in measures 9-11 and a half note in measure 12. The bass clef staff continues the accompaniment.

13 *8va*

flicked it and he flocked it, but it would - n't fly a - way.
flipped it and he flopped it, but it would - n't go a - way.

The musical notation for measures 13-16 is shown. The melody continues with quarter notes in measures 13-15 and a half note in measure 16. The bass clef staff continues the accompaniment.

17 *8va*

2. Lit - tle Pe - ter Rab - bit had a but - ter - fly on his chin,
 4. Lit - tle Pe - ter Rab - bit had an el - e - phant on his toe.

21 *8va*

Lit - tle Pe - ter Rab - bit had a but - ter - fly on his chin,
 Lit - tle Pe - ter Rab - bit had an el - e - phant on his toe,

25 *8va*

Lit - tle Pe - ter Rab - bit had a but - ter - fly on his chin; He
 Lit - tle Pe - ter Rab - bit had an el - e - phant on his toe, He

29 *8va*

shooed it and he shooed it, but it would - n't fly a - way.
 pushed it and he pushed it, but it would - n't fly a - way.