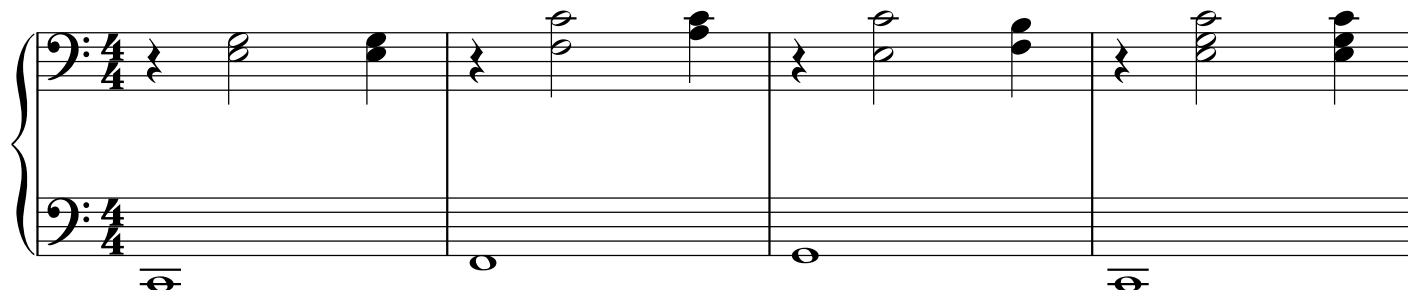


Easter Bunny Song

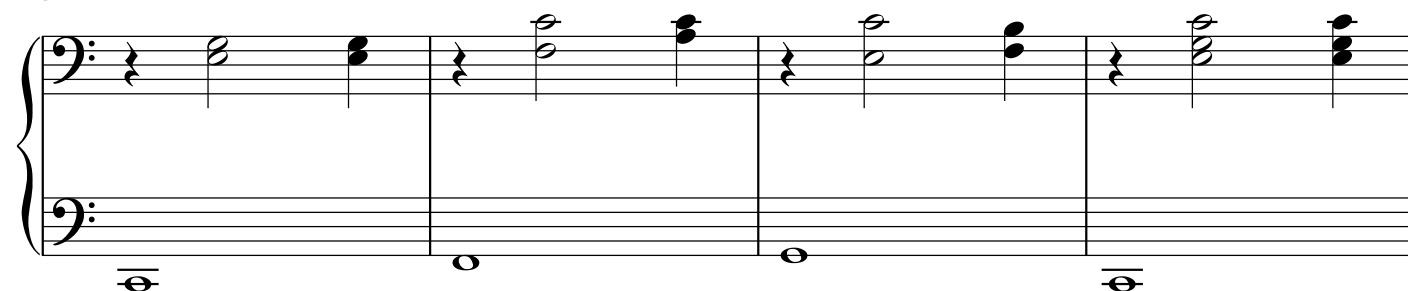
Secondo

Traditional melody
arr. Laurel Hunt Pedersen

1



5



9



13



17

Measures 17-20 of a musical score. The upper staff (treble clef) contains a sequence of eighth notes: G4, A4, B4, C5, D5, E5, F5, G5, A5, B5, C6, D6, E6, F6, G6, A6, B6, C7. The lower staff (bass clef) contains a sequence of whole notes: G2, A2, B2, C3, D3, E3, F3, G3, A3, B3, C4, D4, E4, F4, G4, A4, B4, C5. The key signature is one flat (B-flat), and the time signature is 4/4.

21

Measures 21-24 of a musical score. The upper staff (treble clef) contains a sequence of eighth notes: G4, A4, B4, C5, D5, E5, F5, G5, A5, B5, C6, D6, E6, F6, G6, A6, B6, C7. The lower staff (bass clef) contains a sequence of whole notes: G2, A2, B2, C3, D3, E3, F3, G3, A3, B3, C4, D4, E4, F4, G4, A4, B4, C5. The key signature is one flat (B-flat), and the time signature is 4/4.

25

Measures 25-28 of a musical score. The upper staff (treble clef) contains a sequence of eighth notes: G4, A4, B4, C5, D5, E5, F5, G5, A5, B5, C6, D6, E6, F6, G6, A6, B6, C7. The lower staff (bass clef) contains a sequence of whole notes: G2, A2, B2, C3, D3, E3, F3, G3, A3, B3, C4, D4, E4, F4, G4, A4, B4, C5. The key signature is one flat (B-flat), and the time signature is 4/4.

29

Measures 29-32 of a musical score. The upper staff (treble clef) contains a sequence of eighth notes: G4, A4, B4, C5, D5, E5, F5, G5, A5, B5, C6, D6, E6, F6, G6, A6, B6, C7. The lower staff (bass clef) contains a sequence of whole notes: G2, A2, B2, C3, D3, E3, F3, G3, A3, B3, C4, D4, E4, F4, G4, A4, B4, C5. The key signature is one flat (B-flat), and the time signature is 4/4.

Easter Bunny Song

Primo

Traditional melody
arr. Laurel Hunt Pedersen

1 *8va*

Eas - ter Bun - ny's feet go hop, hop hop!

5 *8va*

Eas - ter Bun - ny's ears go flop, flop, flop!

9 *8va*

He is rush - ing on his way, to bring our eggs on Eas - ter day.

13 *8va*

Hop, hop, hop, hop, hop!

17 *8va*

Eas - ter Bun - ny's eyes go wink, wink, wink!

21 *8va*

Eas - ter Bun - ny's nose go twitch, twitch, twitch!

25 *8va*

He is dash - ing on his way, to bring can - dy on Eas - ter day.

29 *8va*

Hop, hop, hop, hop, hop!