

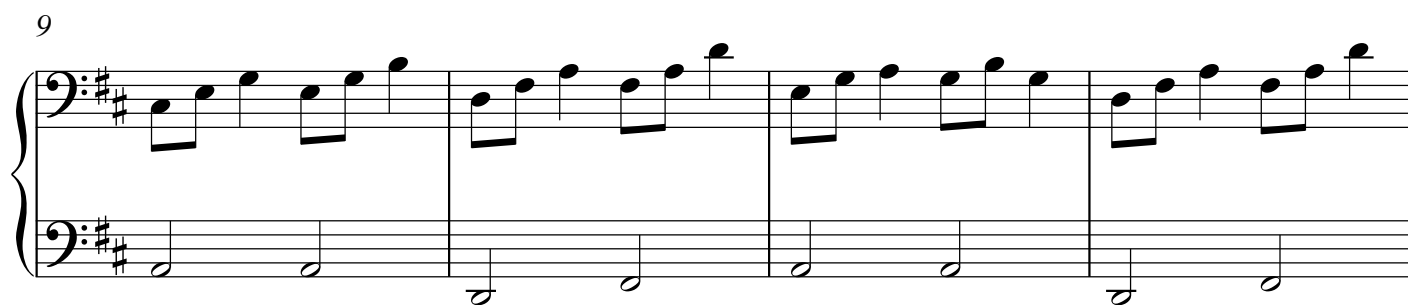
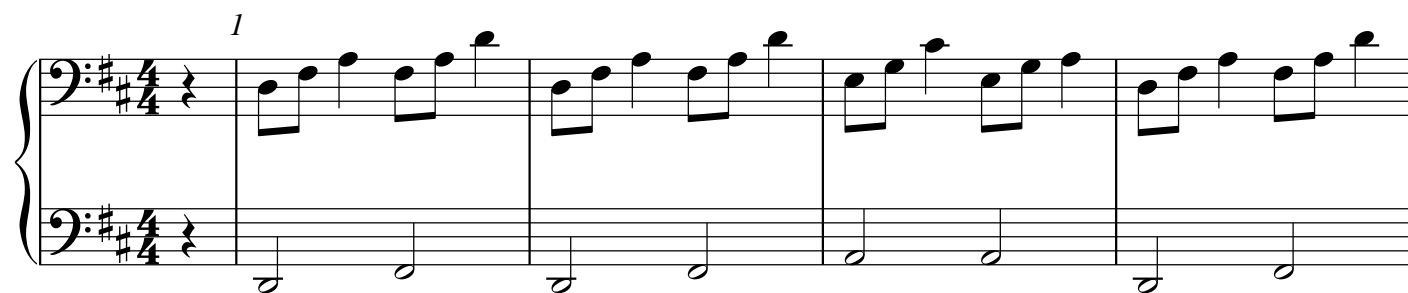
Decorating the Tree

Secondo

Alene R. Dalton, 1915-1986

Ethel Muriel Ashton, 1903-1999

arr. Laurel Hunt Pedersen



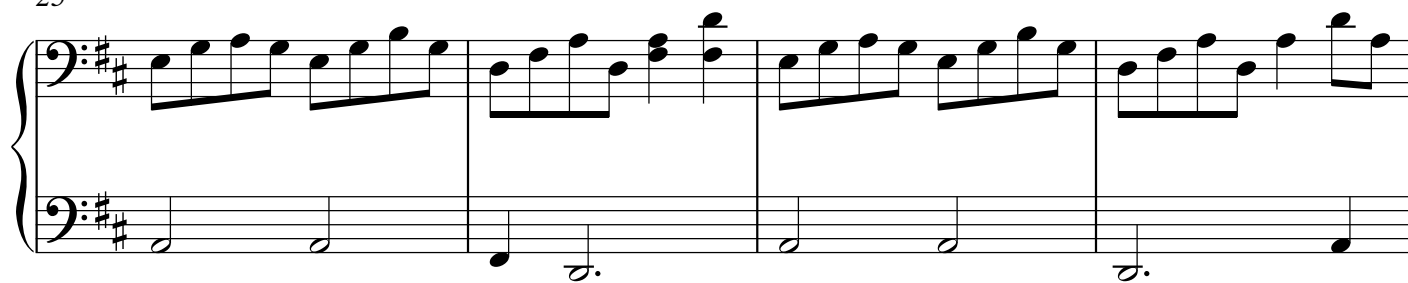
17



21



25



29



Decorating the Tree

Primo

Alene R. Dalton, 1915-1986

Ethel Muriel Ashton, 1903-1999
arr. Laurel Hunt Pedersen

8^{va} 1

Oh, I have a hap - py tin - gle 'way in - side of me, Be -

5 8^{va}

cause it is the time to de - co - rate the tree. We'll

9 8^{va}

put the spark - ly tin - sel and the balls so bright Up -

13 8^{va}

on the bush - y boughs to make a pret - ty sight. We'll

17 *8va*

take some sil - v'ry dan - gles, i - ci - cles, you know, And

21 *8va*

hang them ev - 'ry where, up high and 'way down low. And

25 *8va*

when it glist - ens bright - ly we will get our "Pop" To

29 *8va*

put the shin - y star right on the ver - y top.