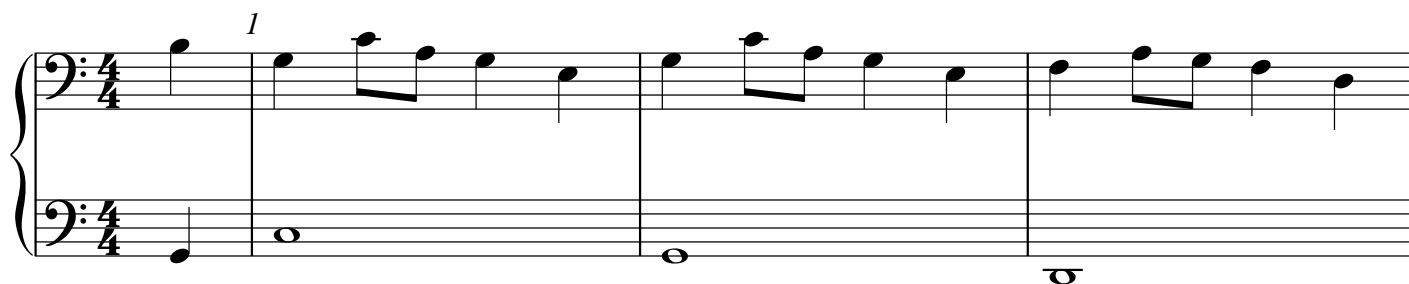


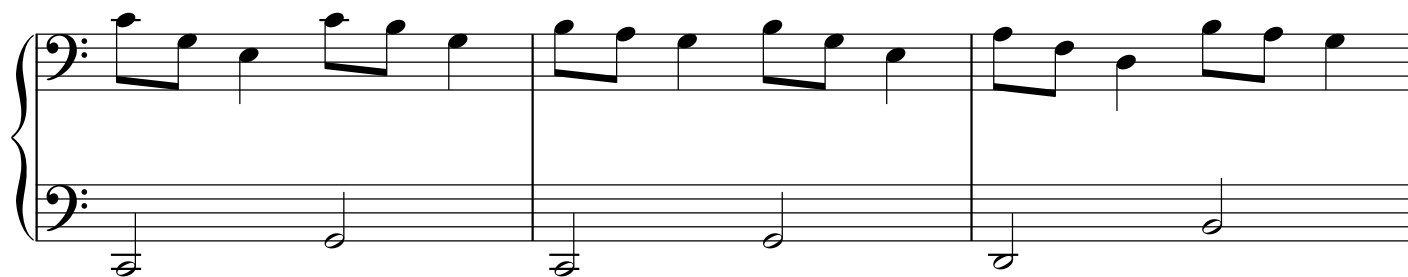
## Christmas Eve

Secondo

Alene R. Dalton, 1915-1986

Rhea B. Allen, 1915-2002  
arr. Laurel Hunt Pedersen

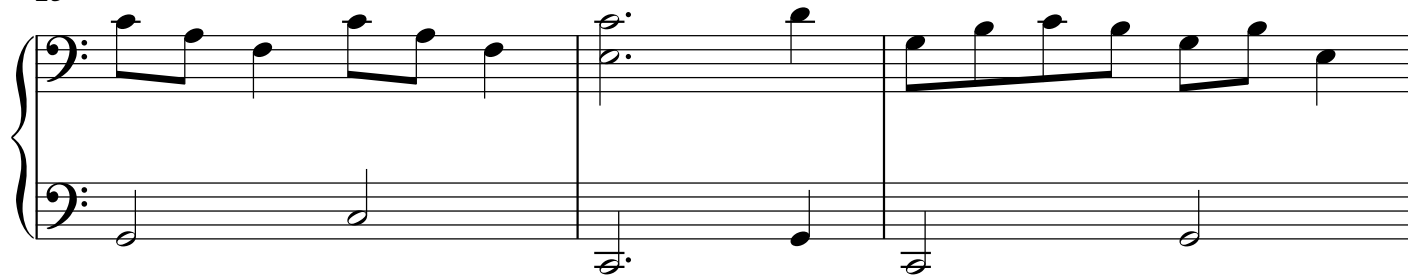
17



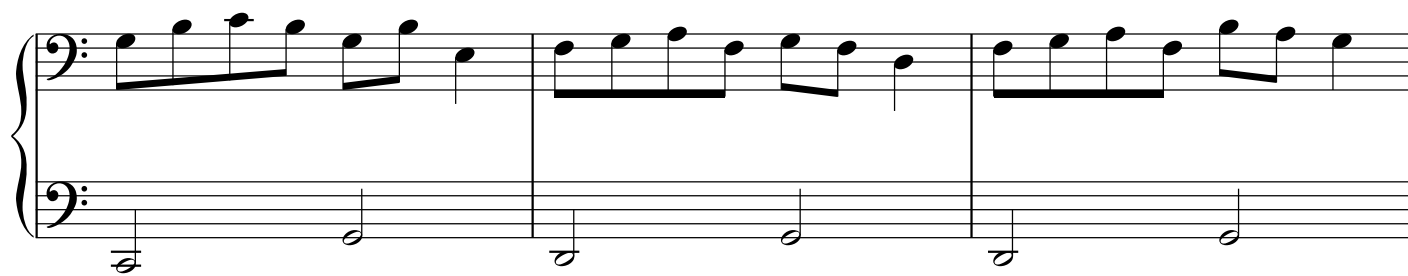
20



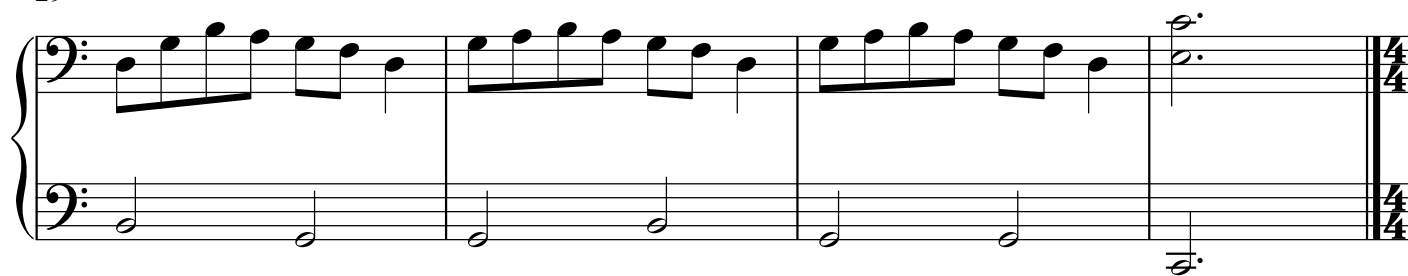
23



26



29



# Christmas Eve

Primo

Alene R. Dalton, 1915-1986

Rhea B. Allen, 1915-2002

arr. Laurel Hunt Pedersen

8<sup>va</sup>-----  
1

It is Christ - mas Eve and I real - ly do be -

4 8<sup>va</sup>-----

lieve that I nev - er have been hap - pi - er since

7 8<sup>va</sup>-----

last year's Christ - mas Eve! Yes, it's Christ - mas

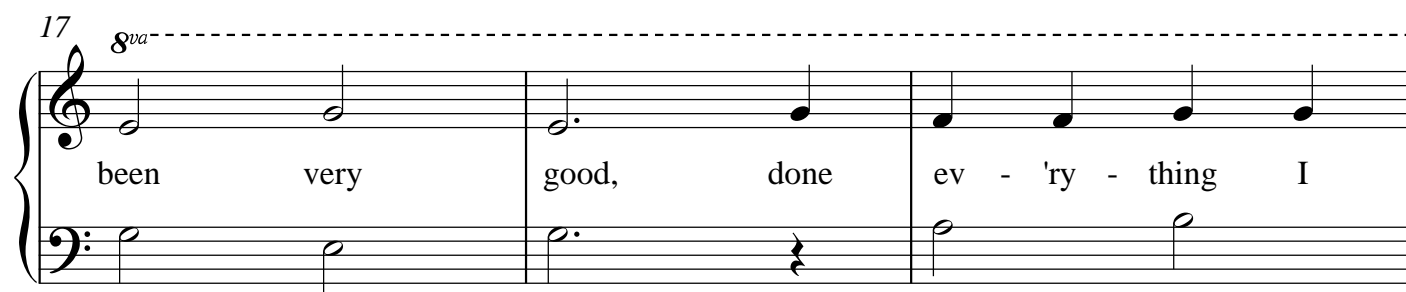
10 8<sup>va</sup>-----

Eve and I can't per - ceive that\_\_\_\_

13 8<sup>va</sup>-----

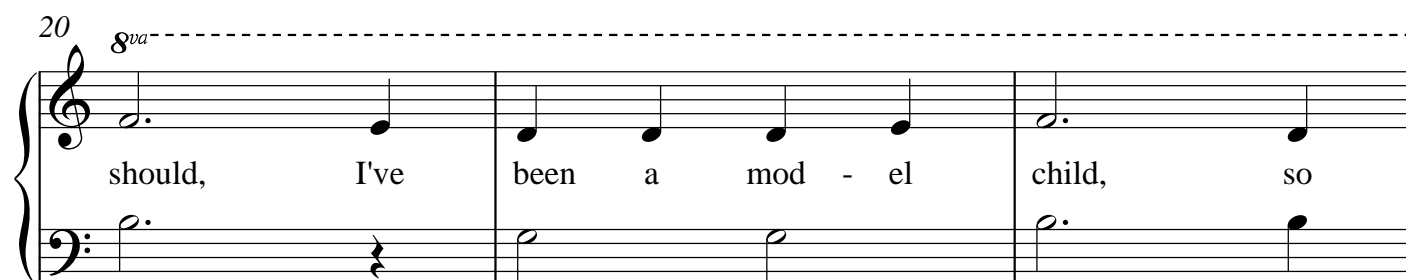
San - ta Claus won't vis - it\_\_\_\_ this year's Christ - mas Eve! I've

17 *8va*



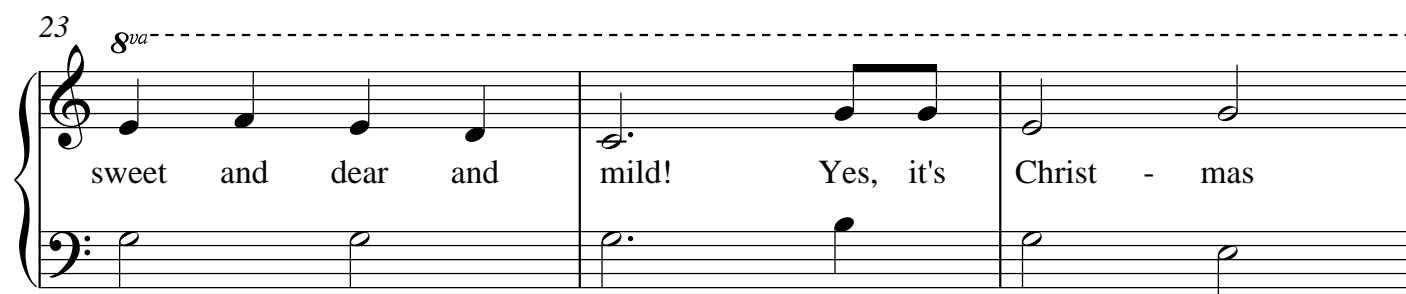
been very good, done ev - 'ry - thing I

20 *8va*



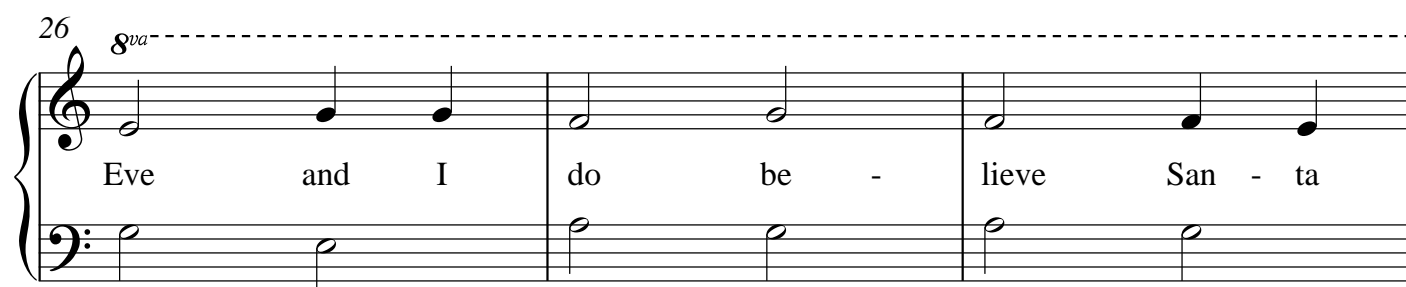
should, I've been a mod - el child, so

23 *8va*



sweet and dear and mild! Yes, it's Christ - mas

26 *8va*



Eve and I do be - lieve San - ta

29 *8va*



and his rein - deer too are com - ing this year's Christ - mas Eve!