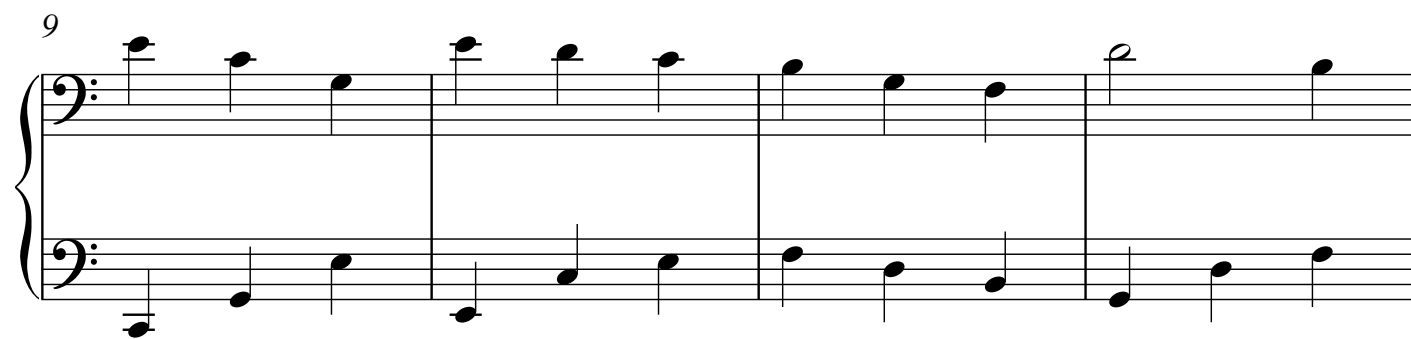
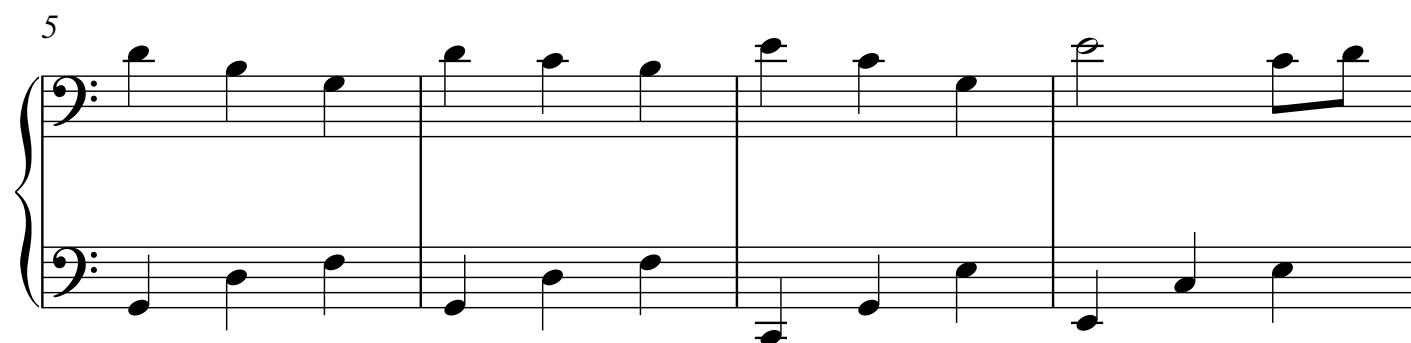
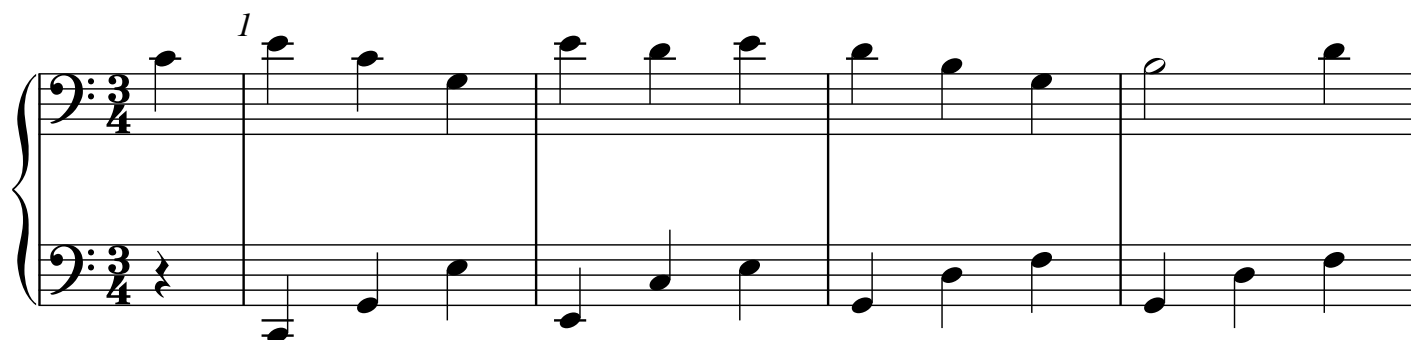


Where Has My Little Dog Gone?

Secondo

Traditional tune
arr. Laurel Hunt Pedersen



17

Measures 17-20 of a musical score. The top staff is in bass clef and contains a sequence of eighth notes: G2, F2, E2, D2, C2, B1, A1, G1. The bottom staff is in bass clef and contains a sequence of eighth notes: G2, F2, E2, D2, C2, B1, A1, G1. The key signature has one flat (Bb).

21

Measures 21-24 of a musical score. The top staff is in bass clef and contains a sequence of eighth notes: G2, F2, E2, D2, C2, B1, A1, G1. The bottom staff is in bass clef and contains a sequence of eighth notes: G2, F2, E2, D2, C2, B1, A1, G1. The key signature has one flat (Bb).

25

Measures 25-28 of a musical score. The top staff is in bass clef and contains a sequence of eighth notes: G2, F2, E2, D2, C2, B1, A1, G1. The bottom staff is in bass clef and contains a sequence of eighth notes: G2, F2, E2, D2, C2, B1, A1, G1. The key signature has one flat (Bb).

29

Measures 29-32 of a musical score. The top staff is in bass clef and contains a sequence of eighth notes: G2, F2, E2, D2, C2, B1, A1, G1. The bottom staff is in bass clef and contains a sequence of eighth notes: G2, F2, E2, D2, C2, B1, A1, G1. The key signature has one flat (Bb). The piece ends with a double bar line and a 3/4 time signature.

Where Has My Little Dog Gone?

Primo

Traditional tune
arr. Laurel Hunt Pedersen

8^{va} 1

Oh where, oh where has my lit - tle dog gone? Oh

5 8^{va}

where, oh where can he be? With his

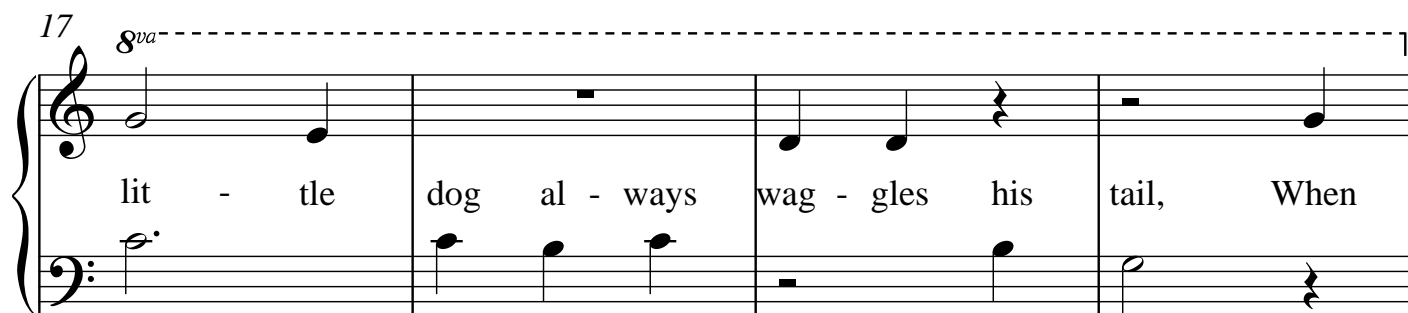
9 8^{va}

tail cut short and his ears cut long, Oh

13 8^{va}

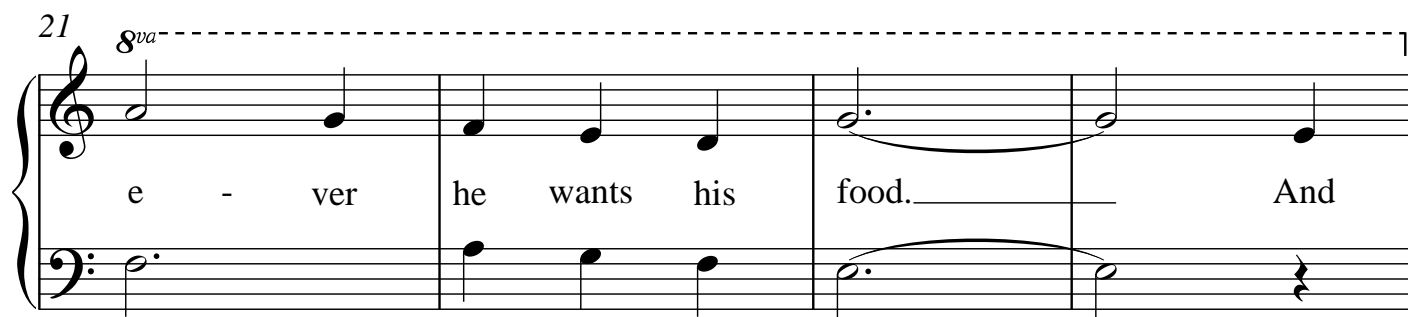
where, oh where can he be? My

17 *8va*



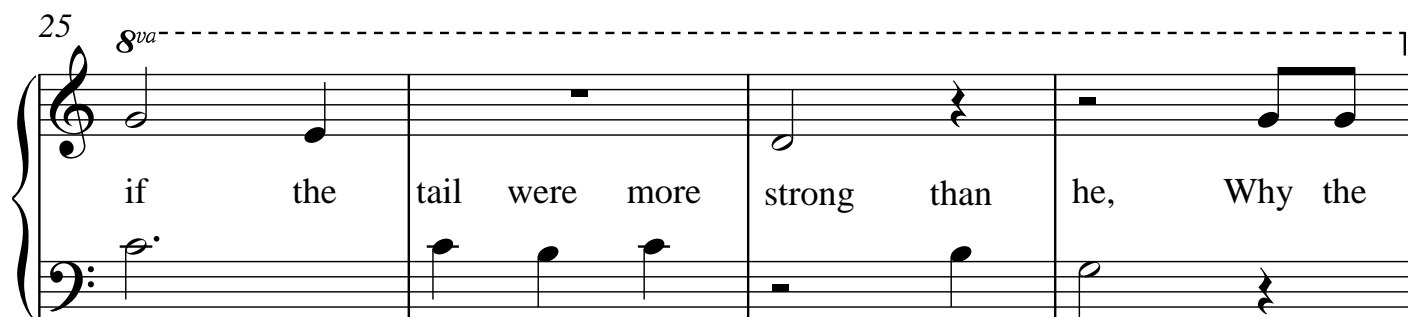
lit - tle dog al - ways wag - gles his tail, When

21 *8va*



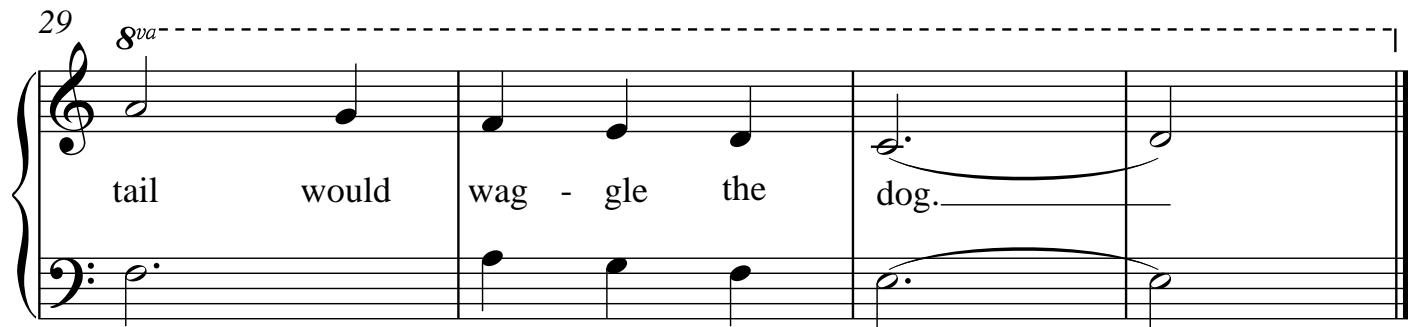
e - ver he wants his food. And

25 *8va*



if the tail were more strong than he, Why the

29 *8va*



tail would wag - gle the dog.