

# Pretty May Flowers

## Secondo

Alene Dalton

*Flowing*

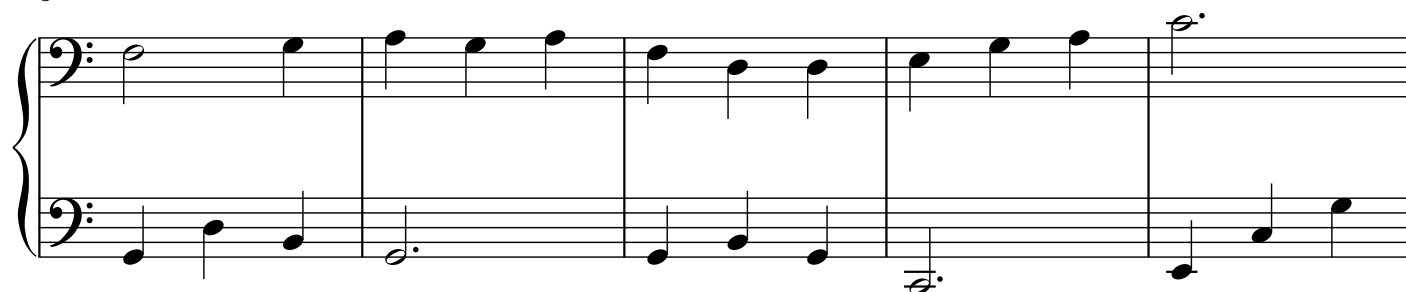
Myriel Ashton

arr. Laurel Hunt Pedersen

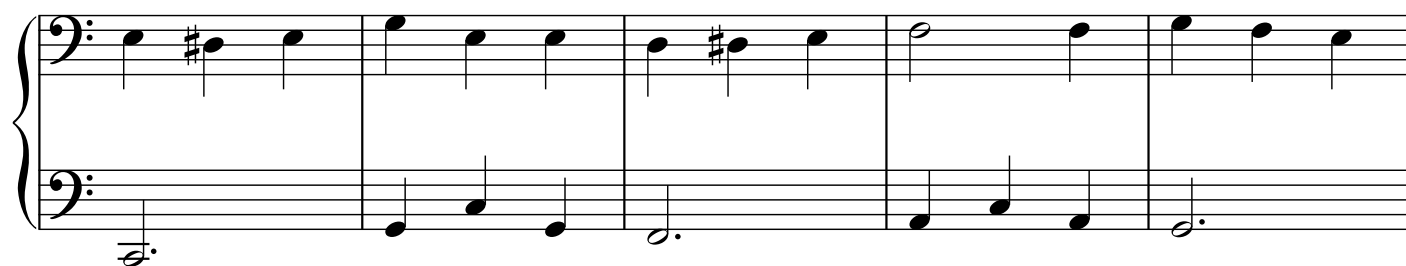
1



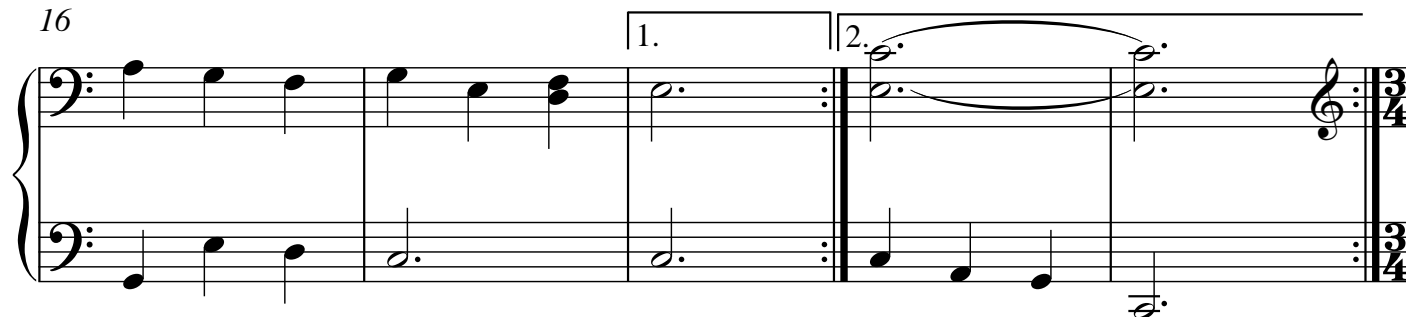
6



11



16



# Pretty May Flowers

11

Primo

Alene Dalton

*Flowing*

Myriel Ashton

arr. Laurel Hunt Pedersen

1 *8va*

Pret - ty May flow - ers are bloom - ing at  
All of the flow - ers are mer - ry, I

Detailed description: This system contains measures 1 through 5. The key signature has one sharp (F#) and the time signature is 3/4. The melody is written in the treble clef, and the bass line is in the bass clef. A dashed line labeled '8va' indicates the melody is an octave higher than written. The lyrics are: 'Pret - ty May flow - ers are bloom - ing at All of the flow - ers are mer - ry, I'.

6 *8va*

last, And when they start bloom - ing, they do it quite fast.  
know, For when the breeze pass - es, they dance to and fro.

Detailed description: This system contains measures 6 through 10. The melody continues in the treble clef, with the bass line providing accompaniment. The lyrics are: 'last, And when they start bloom - ing, they do it quite fast. know, For when the breeze pass - es, they dance to and fro.'

11 *8va*

They must be hap - py to push their bright heads right out of their  
Pret - ty May flow - ers just laugh when they say, "Hel - lo, Mis - ter

Detailed description: This system contains measures 11 through 15. The melody continues in the treble clef, with the bass line providing accompaniment. The lyrics are: 'They must be hap - py to push their bright heads right out of their Pret - ty May flow - ers just laugh when they say, "Hel - lo, Mis - ter'.

16 *8va*

cold and dark win - tr - y beds.  
Blue - bird, the Spring's here to stay."

Detailed description: This system contains measures 16 through 20. The melody continues in the treble clef, with the bass line providing accompaniment. The lyrics are: 'cold and dark win - tr - y beds. Blue - bird, the Spring's here to stay."'. The system ends with a double bar line and repeat signs for two endings. The first ending leads back to measure 16, and the second ending leads to the final measure.