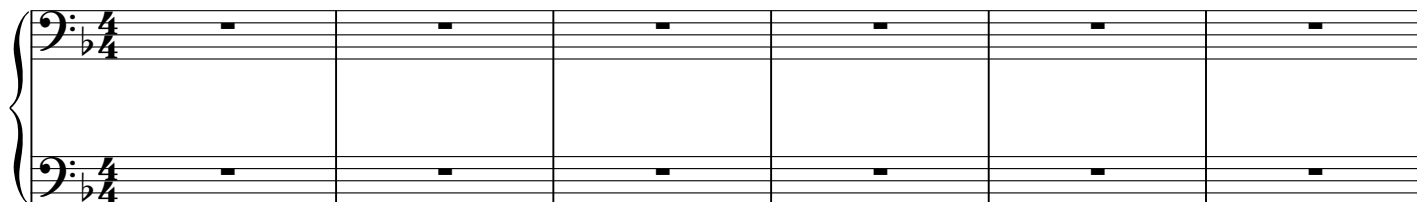


Death is a Long Sleep

Secondo, 4-part round

Franz Joseph Haydn, 1732-1809
arr. Laurel Hunt Pedersen

1



7



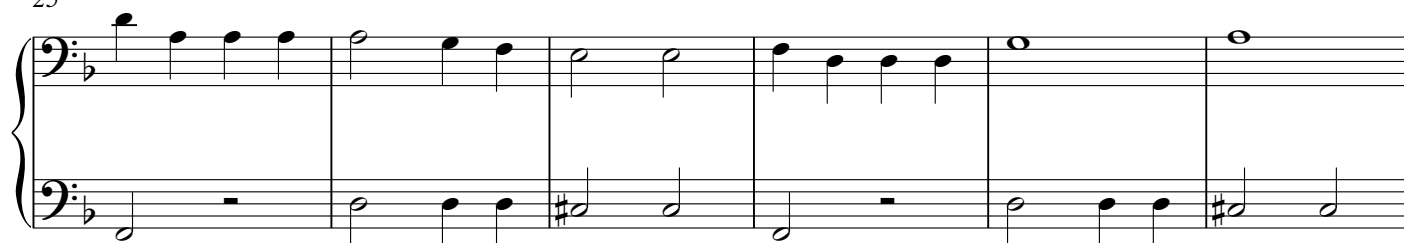
13



19



25



31

Accompaniment

Measures 31-36: The right hand features a melodic line with a half note G4, a half note A4, a half note B4, a half note C5, a half note D5, a half note E5, a half note F#5, and a half note G5. The left hand provides a steady accompaniment with a quarter note G3, a quarter note A3, a quarter note B3, a quarter note C4, a quarter note D4, a quarter note E4, a quarter note F#4, and a quarter note G4.

37

Measures 37-42: The right hand continues the melodic line with a half note G4, a half note A4, a half note B4, a half note C5, a half note D5, a half note E5, a half note F#5, and a half note G5. The left hand provides a steady accompaniment with a quarter note G3, a quarter note A3, a quarter note B3, a quarter note C4, a quarter note D4, a quarter note E4, a quarter note F#4, and a quarter note G4.

43

Measures 43-48: The right hand continues the melodic line with a half note G4, a half note A4, a half note B4, a half note C5, a half note D5, a half note E5, a half note F#5, and a half note G5. The left hand provides a steady accompaniment with a quarter note G3, a quarter note A3, a quarter note B3, a quarter note C4, a quarter note D4, a quarter note E4, a quarter note F#4, and a quarter note G4.

49

Measures 49-54: The right hand continues the melodic line with a half note G4, a half note A4, a half note B4, a half note C5, a half note D5, a half note E5, a half note F#5, and a half note G5. The left hand provides a steady accompaniment with a quarter note G3, a quarter note A3, a quarter note B3, a quarter note C4, a quarter note D4, a quarter note E4, a quarter note F#4, and a quarter note G4.

55

Measures 55-60: The right hand continues the melodic line with a half note G4, a half note A4, a half note B4, a half note C5, a half note D5, a half note E5, a half note F#5, and a half note G5. The left hand provides a steady accompaniment with a quarter note G3, a quarter note A3, a quarter note B3, a quarter note C4, a quarter note D4, a quarter note E4, a quarter note F#4, and a quarter note G4.

Death is a Long Sleep

Primo, 4-part round

Franz Joseph Haydn, 1732-1809

arr. Laurel Hunt Pedersen

1 *8va*

1. Death is a long, long sleep. Sleep is a short, short

2. Death is a long, long

7 *8va*

death which soft-ens as is ends life's grief. Death is a long sleep.

sleep. Sleep is a short, short death which soft-ens as is ends life's

13 *8va*

grief. Death is a long sleep.

19 *8va*

grief. Death is a long sleep.

25 *8va*

grief. Death is a long sleep.

31 *8va*

Measures 31-36: Treble clef, key of B-flat major. Measure 31: quarter notes Bb, C, D, E. Measure 32: quarter notes F, G, A, Bb. Measure 33: quarter notes C, D, E, F. Measure 34: quarter notes G, A, Bb, C. Measure 35: half note D, half note E. Measure 36: half note F, half note G. Bass clef: Measure 31: whole rest. Measure 32: quarter notes Bb, C, D, E. Measure 33: quarter notes F, G, A, Bb. Measure 34: quarter notes C, D, E, F. Measure 35: quarter notes G, A, Bb, C. Measure 36: quarter notes D, E, F, G.

37 *8va*

Measures 37-42: Treble clef, key of B-flat major. Measure 37: quarter notes Bb, C, D, E. Measure 38: half note F, half note G. Measure 39: quarter notes A, Bb, C, D. Measure 40: quarter notes E, F, G, A. Measure 41: whole rest. Measure 42: quarter notes Bb, C, D, E. Bass clef: Measure 37: quarter notes Bb, C, D, E. Measure 38: quarter notes F, G, A, Bb. Measure 39: quarter notes C, D, E, F. Measure 40: quarter notes G, A, Bb, C. Measure 41: quarter notes D, E, F, G. Measure 42: quarter notes A, Bb, C, D.

43 *8va*

Measures 43-48: Treble clef, key of B-flat major. Measure 43: quarter notes Bb, C, D, E. Measure 44: quarter notes F, G, A, Bb. Measure 45: quarter notes C, D, E, F. Measure 46: quarter notes G, A, Bb, C. Measure 47: half note D, half note E. Measure 48: half note F, half note G. Bass clef: Measure 43: whole rest. Measure 44: quarter notes Bb, C, D, E. Measure 45: quarter notes F, G, A, Bb. Measure 46: quarter notes C, D, E, F. Measure 47: quarter notes G, A, Bb, C. Measure 48: quarter notes D, E, F, G.

49 *8va*

Measures 49-54: Treble clef, key of B-flat major. Measure 49: quarter notes Bb, C, D, E. Measure 50: half note F, half note G. Measure 51: quarter notes A, Bb, C, D. Measure 52: quarter notes E, F, G, A. Measure 53: whole rest. Measure 54: quarter notes Bb, C, D, E. Bass clef: Measure 49: quarter notes Bb, C, D, E. Measure 50: quarter notes F, G, A, Bb. Measure 51: quarter notes C, D, E, F. Measure 52: quarter notes G, A, Bb, C. Measure 53: whole rest. Measure 54: whole rest.

55 *8va*

Measures 55-60: Treble clef, key of B-flat major. Measure 55: quarter notes Bb, C, D, E. Measure 56: quarter notes F, G, A, Bb. Measure 57: quarter notes C, D, E, F. Measure 58: quarter notes G, A, Bb, C. Measure 59: half note D, half note E. Measure 60: half note F, half note G. Bass clef: Measure 55: whole rest. Measure 56: whole rest. Measure 57: whole rest. Measure 58: whole rest. Measure 59: whole rest. Measure 60: whole rest.