

## Secondo

Traditional Camp Song  
arr. Laurel Hunt Pedersen

Copyright © 2018 Laurel Hunt Pedersen

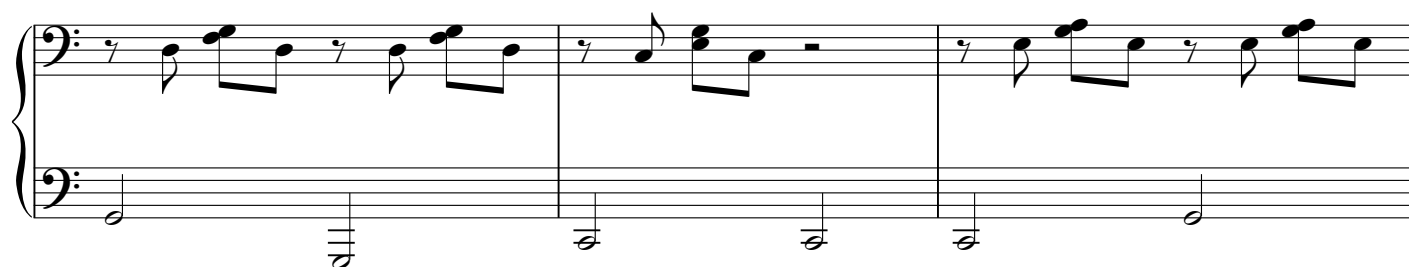
17



20



23



26



29



33

Measures 33-35 of a musical score. The upper staff (treble clef) contains a sequence of chords: G4-B4 (measure 33), G4-A4-B4 (measure 34), G4-B4 (measure 35), and G4-B4 (measure 36). The lower staff (bass clef) contains a sequence of notes: G2 (measure 33), G2 (measure 34), G2 (measure 35), and G2 (measure 36).

36

Measures 36-38 of a musical score. The upper staff (treble clef) contains a sequence of chords: G4-B4 (measure 36), G4-A4-B4 (measure 37), G4-B4 (measure 38), and G4-B4 (measure 39). The lower staff (bass clef) contains a sequence of notes: G2 (measure 36), G2 (measure 37), G2 (measure 38), and G2 (measure 39).

39

Measures 39-41 of a musical score. The upper staff (treble clef) contains a sequence of chords: G4-B4 (measure 39), G4-A4-B4 (measure 40), G4-B4 (measure 41), and G4-B4 (measure 42). The lower staff (bass clef) contains a sequence of notes: G2 (measure 39), G2 (measure 40), G2 (measure 41), and G2 (measure 42).

42

Measures 42-44 of a musical score. The upper staff (treble clef) contains a sequence of chords: G4-B4 (measure 42), G4-A4-B4 (measure 43), G4-B4 (measure 44), and G4-B4 (measure 45). The lower staff (bass clef) contains a sequence of notes: G2 (measure 42), G2 (measure 43), G2 (measure 44), and G2 (measure 45).

45

Measures 45-48 of a musical score. The upper staff (treble clef) contains a sequence of chords: G4-B4 (measure 45), G4-A4-B4 (measure 46), G4-B4 (measure 47), and G4-B4 (measure 48). The lower staff (bass clef) contains a sequence of notes: G2 (measure 45), G2 (measure 46), G2 (measure 47), and G2 (measure 48). The score ends with a double bar line and a 4/4 time signature.

# Princess Pat

27

Dedicated to  
President Charles W. Dahlquist

Primo

Traditional Camp Song  
arr. Laurel Hunt Pedersen

*8va* Verse 1 *1*

The Princ-ess Pat, lived in a tree. She sailed a- cross, the se- ven

The Prin- cess Pat, lived in a tree. She sailed a- cross

*4* *8va*

seas. She sailed a - cross the chan - nel too, And took with

the se- ven seas. She sailed a - cross the chan - nel too, And took with

*7* *8va* Chorus:

her a RI-GA-BAM - BOO. A RI-GA-BAM BOO, Now what is

her A RI-GA-BAM - BOO. A RI-GA-BAM- BOO,

*10* *8va*

that? It's some-thing made, by Prin-cess Pat. It's red and

Now what is that? It's some-thing made, by Prin- cess Pat. It's red and

*13* *8va* Verse 2

gold and pur - ple too. That's why it's called A RI-GA-BAM- BOO. Now Cap- tain

gold and pur - ple too. That's why it's called A RI-GA-BAM- BOO.

17 *8va*

Jack, Had a might-y fine crew. They sailed a- cross, The chan- nel

Now Cap-tain Jack, Had a might-y fine crew. They sailed a- cross

20 *8va*

too. But his ship sank, and yours will too, If you don't

the chan- nel too. But his ship sank, and yours will too, If you don't

23 *8va*

Chorus:

take A RI-GA-BAM TOO. A RI-GA-BAM BOO, Now what is

take A RI-GA-BAM - BOO. A RI-GA-BAM- BOO,

26 *8va*

that? It's some-thing made, by Prin-cess Pat. It's red and

Now what is that? It's some-thing made, by Prin - cess Pat. It's red and

29 *8va*

Verse 3

gold, and pur - ple too. That's why it's called A RI-GA-BAM BOO. Now Cap-tain

gold, and pur - ple too. That's why it's called A RI-GA-BAM- BOO.

33 *8va*

Kirk, He was no jerk, And Mis-ter Spock, He was no

Now Cap-tain Kirk, He was no jerk, And Mis-ter Spock,

36 *8va*

jock, But their ship flew, and yours will too, If you just

He was no jock, But their ship flew, and yours will too, If you just

39 *8va* Chorus:

take A RI-GA-BAM - BOO. A RI-GA-BAM BOO, Now what is

take A RI-GA-BAM - BOO. A RI-GA-BAM-BOO,

42 *8va*

that? It's some-thing made, By Prin-cess Pat. It's red and

Now what is that? It's some-thing made, By Prin-cess Pat. It's red and

45 *8va*

gold, and pur-ple too, That's why it's called A RI-GA-BAM - BOO.

gold and pur-ple too, That's why it's called A RI-GA-BAM - BOO.